

Plas Madoc – Baseline Data document

Produced by Questions Answered,
Alexandra Upton and Matt McGovern

September 2003

Contents

1 Introduction 3

2 Executive summary 4

3 Methodology 5

4 Findings..... 6

 4.1 Jobs, Business and Skills..... 6

 4.2 Housing, Transport and Environment.....18

 4.3 Community Safety.....25

 4.4 Health and Wellbeing28

 4.5 Active Communities.....32

 4.6 Education and Life Long learning.....39

5 Conclusions42

1 Introduction

1.1 Background

The National Assembly for Wales launched the 'Communities First' programme in June 2001. 'Communities First' is aimed at cutting poverty and helping to improve the lives of the people who live in the poorest areas. A total of 88 of Wales' most disadvantaged communities are set to benefit from this regeneration programme.

The ward of Plas Madoc is an area that has been given 'Communities First' status. Plas Madoc is currently in the process of developing a ten-year strategy to regenerate the area.

A key element in developing this strategy is to obtain statistical baseline data on Plas Madoc.

1.2 Objective

The aim of this document is to provide an overview of Plas Madoc as an area using publicly available statistical area.

1.3 Structure of report

The findings of the study are contained in this report. The report has XXX further chapters:

- Chapter 2 presents a description of the methodology
- Chapter 3 presents the findings of the study by the key themes

2 Executive summary

Jobs, businesses and skills

- Overall, 39% of Plas Madoc residents are currently employed, whilst 6% are unemployed and 55% are inactive.
- Common industries that Plas Madoc residents work in include manufacturing (33%) and wholesale and retail trade (19%).
- Plas Madoc has a higher percentage of its residents in elementary occupations and process, plant and machine operatives, than in Wrexham and Wales as a whole. Whilst they have less in professional occupations and managers and senior official roles.

Housing, transport and environment

- There are currently 873 households in Plas Madoc.
- 70% of housing is terraced
- The majority of houses in Plas Madoc are rented from the local authority (81%).
- In Plas Madoc just under half of households (49%) do not own a car.

Community safety

- In Wrexham 19 violent offences have occurred per 1000 population. This is only slightly higher than Wales as a whole
- The number of robbery offences in Wrexham as a whole was recorded as 0.4 per 1000 population
- Overall there were 15.5 burglary offences per 1000 households in Wrexham, this is higher than the number for Wales as a whole which stands at 13 per 1000 households.
- In Wrexham there were 18.1 thefts of or from a motor vehicle. This is slightly higher than Wales as a whole which stands at 17 per 1000 population.

Health and wellbeing

- Only 58% of Plas Madoc residents rated their health as “good” compared to 65% and 67% of Wales and Wrexham respectively. 17% of Plas Madoc’s population rated their health as “not good”,
- Overall, 29% of Plas Madoc’s residents stated they were suffering from a limiting long-term illness.

Active communities

- The 2001 census reported that the population in Plas Madoc is 1833. This is a 9% drop since 2000, and an overall fall since 1991 of 20%.

Education and lifelong learning

- Just over half of Plas Madoc residents have no qualifications. This is substantially higher than Wrexham and Wales as a whole where only 33% stated they had no qualifications.
- Only five per cent of the population have level 4/5 qualifications compared to 16% in Wrexham and 17% in Wales as a whole.
- Just over half of the population in Plas Madoc are estimated to have low numeracy skills.
- Just under half (49%) of residents in Plas Madoc are classed as having low literacy skills.

3 Methodology

The majority of data in this report was obtained from the Neighbourhood Statistics website (www.neighbourhood.statistics.gov.uk). This is a very useful government website that provides data down to ward level from a variety of sources including:

- 2001 Census of Population
- Indices of Deprivation
- The Land Registry

Other sources of data included:

- Wrexham MBC
- Basic skills agency

Where a graph shows two data sources and one of them is Wrexham MBC (e.g. 3.1.11, 3.4.3 and 3.4.4), the percentage of the population has been worked out by dividing the data we were able to obtain by the Midyear 2000 population estimate. Therefore it is important to remember that the percentage represents the proportion of the whole population, not just the working age population.

The rest of the report breaks the data down by the following headings:

- Jobs businesses and skills
- Housing environment and transport
- Community safety
- Health and wellbeing
- Active communities
- Education and lifelong learning

4 Findings

3.1 Jobs, Business and Skills

Introduction

This section examines:

- Index of multiple deprivation scores
- Economic activity
- Unemployment
- Industry and occupation of residents
- Location of employment
- Income support
- Businesses within Plas Madoc

The index of multiple deprivation

The Index of Multiple Deprivation ranks Plas Madoc as the 12th most deprived ward in terms of employment out of a possible 865 wards. 2000

In terms of income, the Index of Multiple deprivation ranks Plas Madoc as the third most deprived ward in Wales (out of 865 wards).

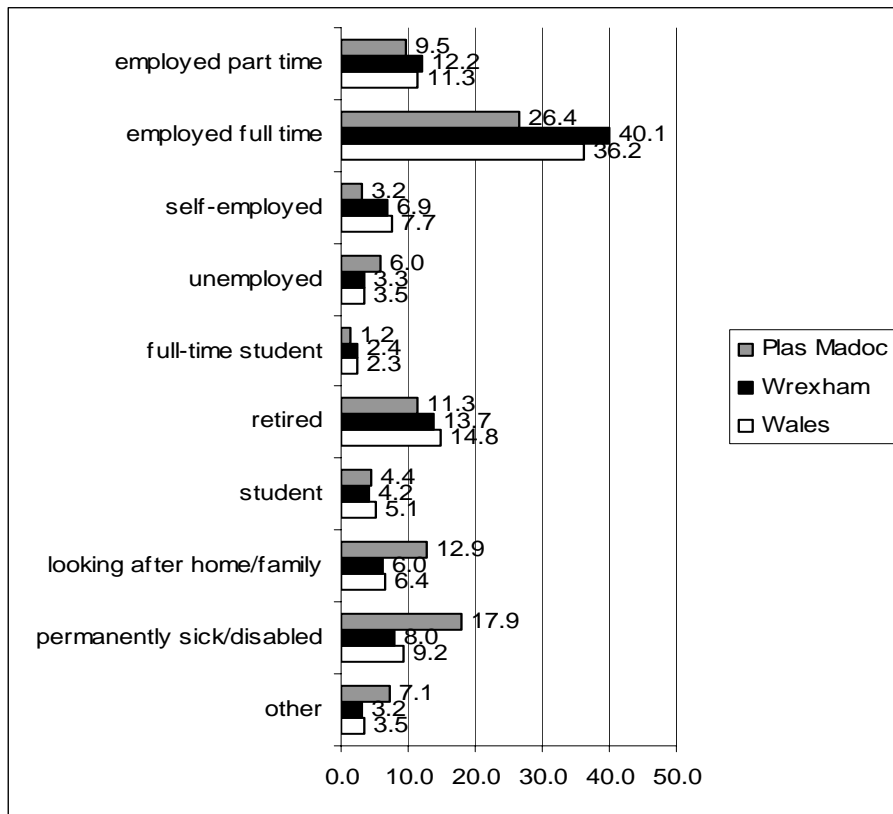
Economic Activity

The following chart shows which economic activity Plas Madoc residents are engaged in, and allows comparison with both the Wrexham average and the rest of Wales. All the data refers to those of working age, which is considered to be 16 to 74.

Overall, 39% of Plas Madoc residents are currently employed (either full-time, part-time or self-employed), whilst 6% are unemployed and 55% are inactive.

Significant differences between Plas Madoc and the rest of Wrexham and Wales are that Plas Madoc has a far higher percentage of residents who are looking after a home/family who are permanently disabled, or who are unemployed. Plas Madoc also has a far lower percentage of people who are in full time employment.

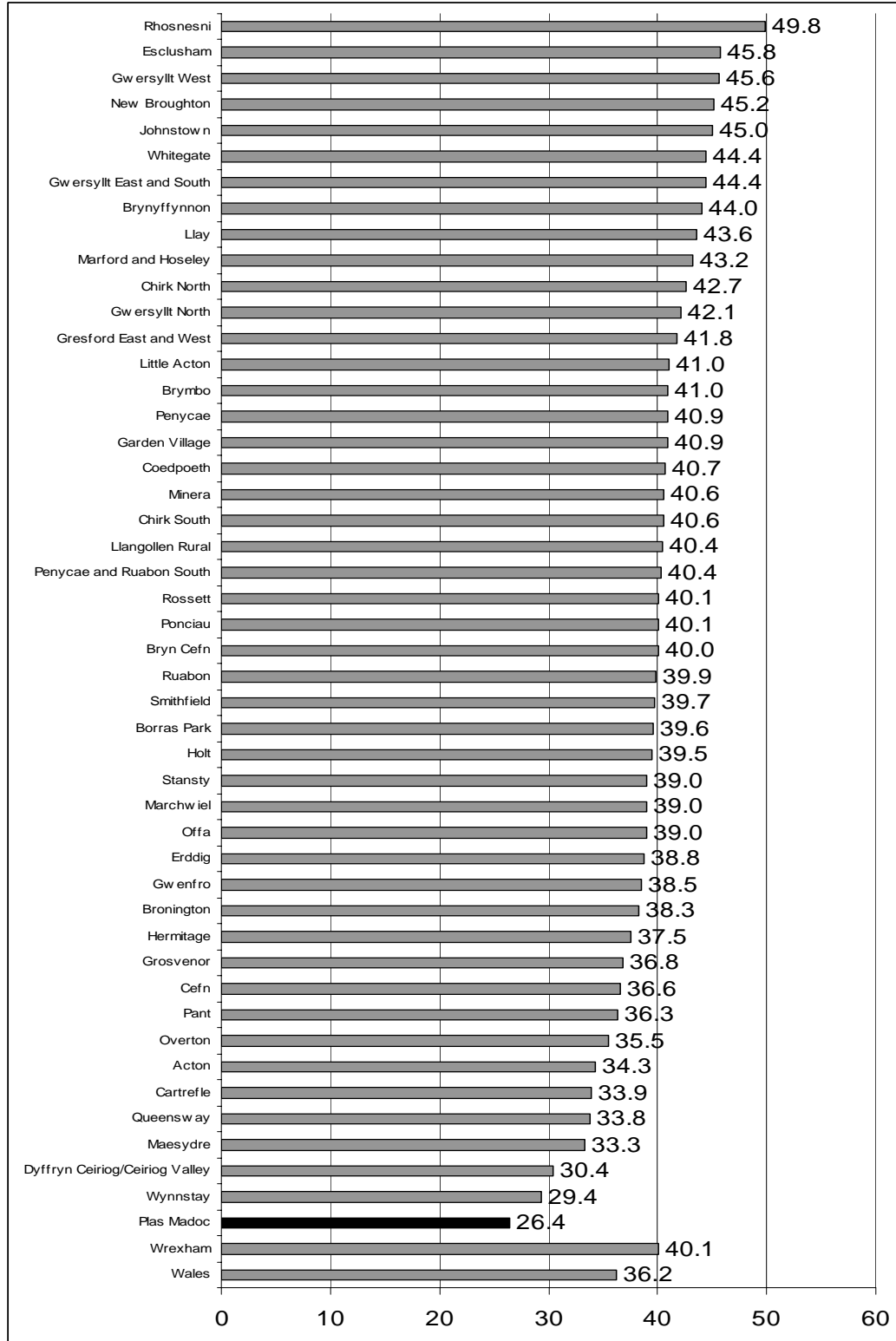
Table 3.1.1: Economic Activity of Residents in Plas Madoc, Wrexham and Wales (%)



Source: National Statistics, 2001 Census of Population

A low level of full-time employment is confirmed by the following table that shows the percentage of the population that are employed full-time in Wrexham by ward. As can be seen, for the whole of Wrexham, Plas Madoc has the lowest level of full-time employment.

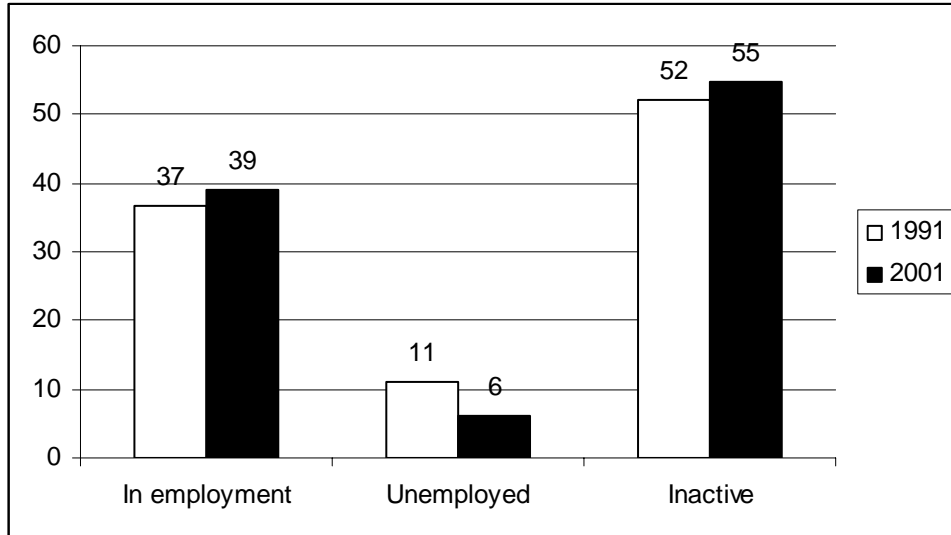
Table 3.1.2: Full time employment in Wrexham wards (%)



Source: National Statistics, 2001 Census of Population

The graph below compares the economic activity of residents in 1991 with those in 2001. The economic situation in Plas Madoc has changed slightly since the 1991 Census of Population. The percentage of the population in employment has increased from 37% to 39% and the percentage of the population unemployed fell from 11% to 6%. However the percentage of those classed as economically inactive rose from 52% to 55%.

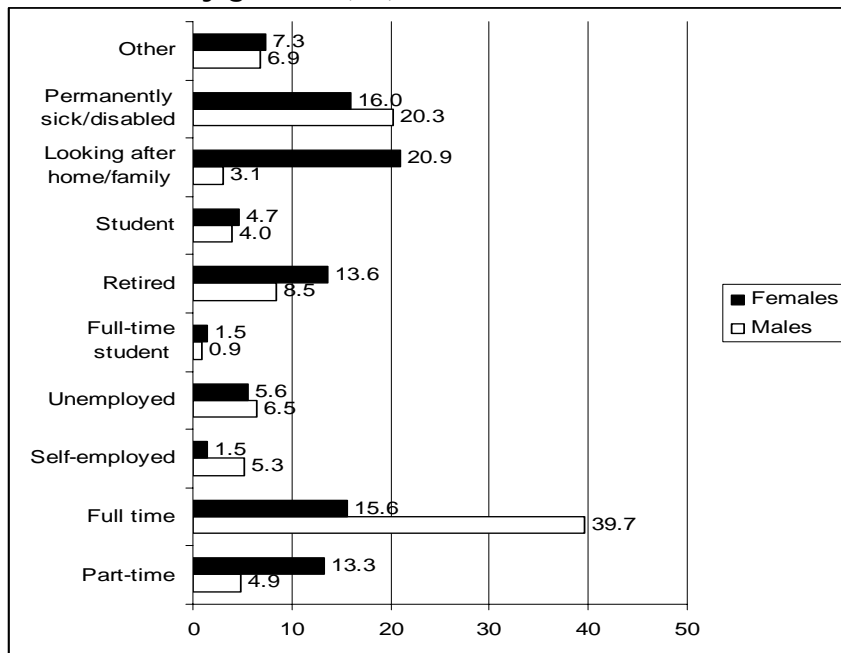
Table 3.1.3: Economic Activity: Comparison between 1991 and 2001(%)



Source: National Statistics, 1991 Census of Population & 2001 Census of Population,

The graph below shows economic activity in Plas Madoc by gender. As would be expected, a far greater percentage of females are engaged in looking after a family/ household, whilst a far greater percentage of men are in full time employment.

Table 3.1.4: Economic by gender (%)

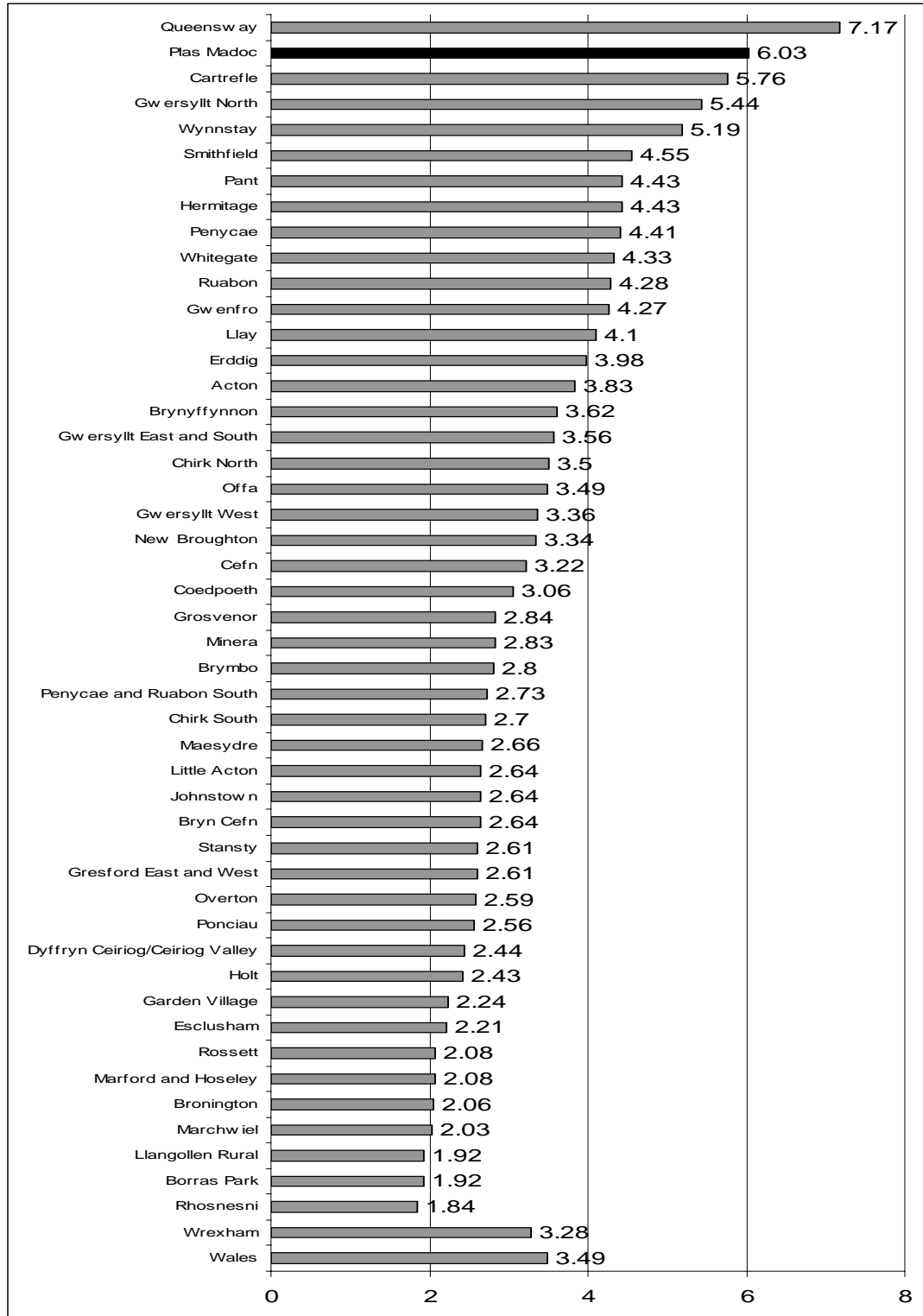


Source: National Statistics, 2001 Census of Population

Unemployment

The following graph illustrates the percentage of residents who are unemployed in Wrexham by ward. Plas Madoc has the second highest percentage of residents unemployed of all the wards in Wrexham.

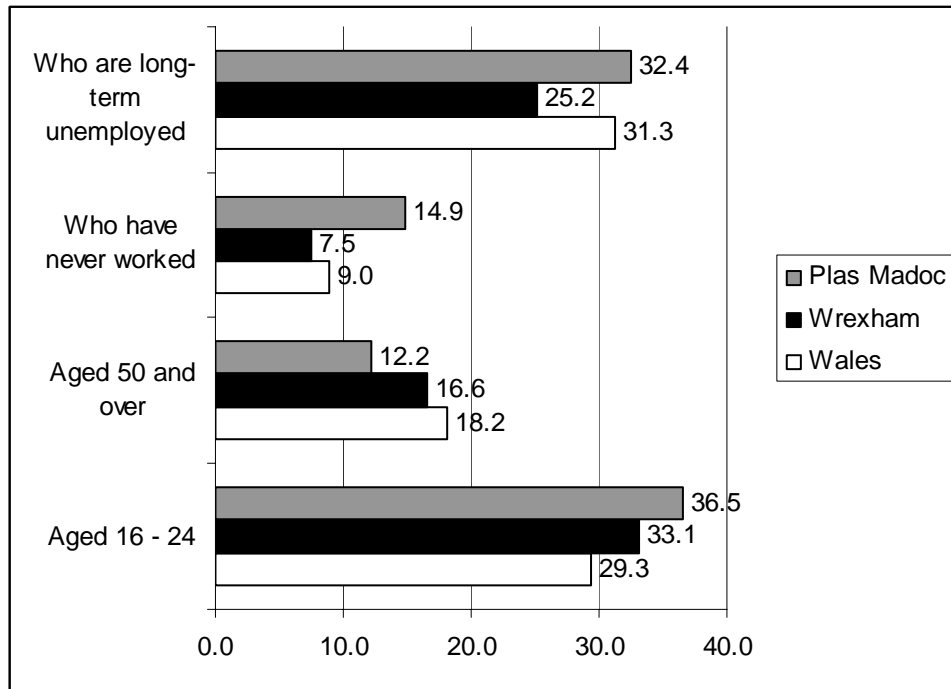
Table 3.1.5: Unemployment in Wrexham wards (%)



Source: National Statistics, 2001 Census of Population

The following chart details the nature of unemployment in Plas Madoc and allows comparison to the rest of Wrexham and Wales. Plas Madoc has a much higher percentage of long term unemployed than the rest of Wrexham but the level is in fact close to the level in Wales overall. Plas Madoc does have a significantly higher percentage of its unemployed population in the state never having worked. Plas Madoc also has a higher percentage of its unemployed aged between 16 to 24 compared to Wrexham and Wales but a lower percentage of individuals over 50 who are unemployed.

Table 3.1.6: Percentage breakdown of unemployment (%)



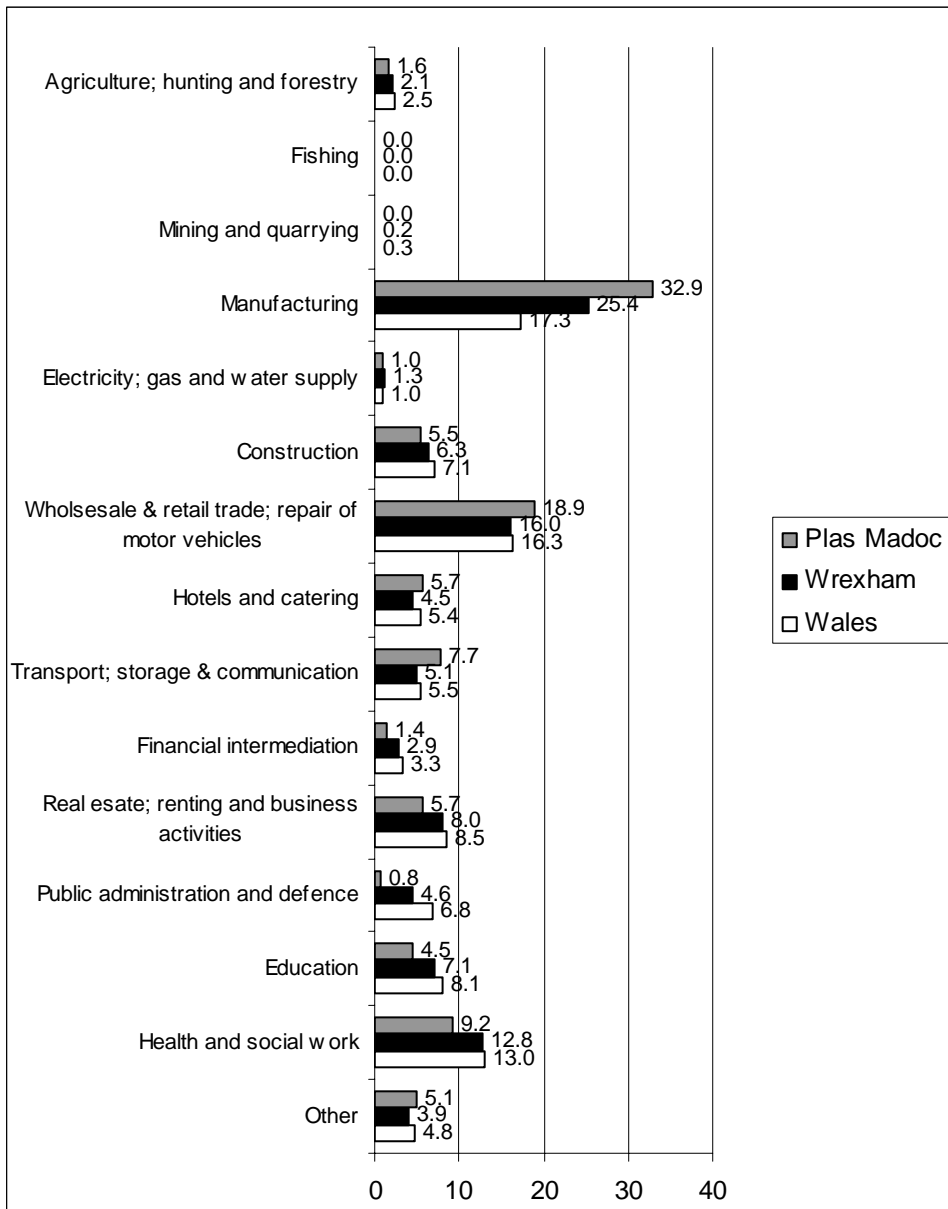
Source: National Statistics, 2001 Census of Population

Industry of Employment

The chart below details what industry employed Plas Madoc residents work in.

Common industries that Plas Madoc residents work in include manufacturing (33%) and wholesale and retail trade (19%). Compared with Wrexham and Wales as a whole, Plas Madoc residents are more likely to work in manufacturing and less likely to work in public admin and defence.

Table 3.1.7: Industry of Employment

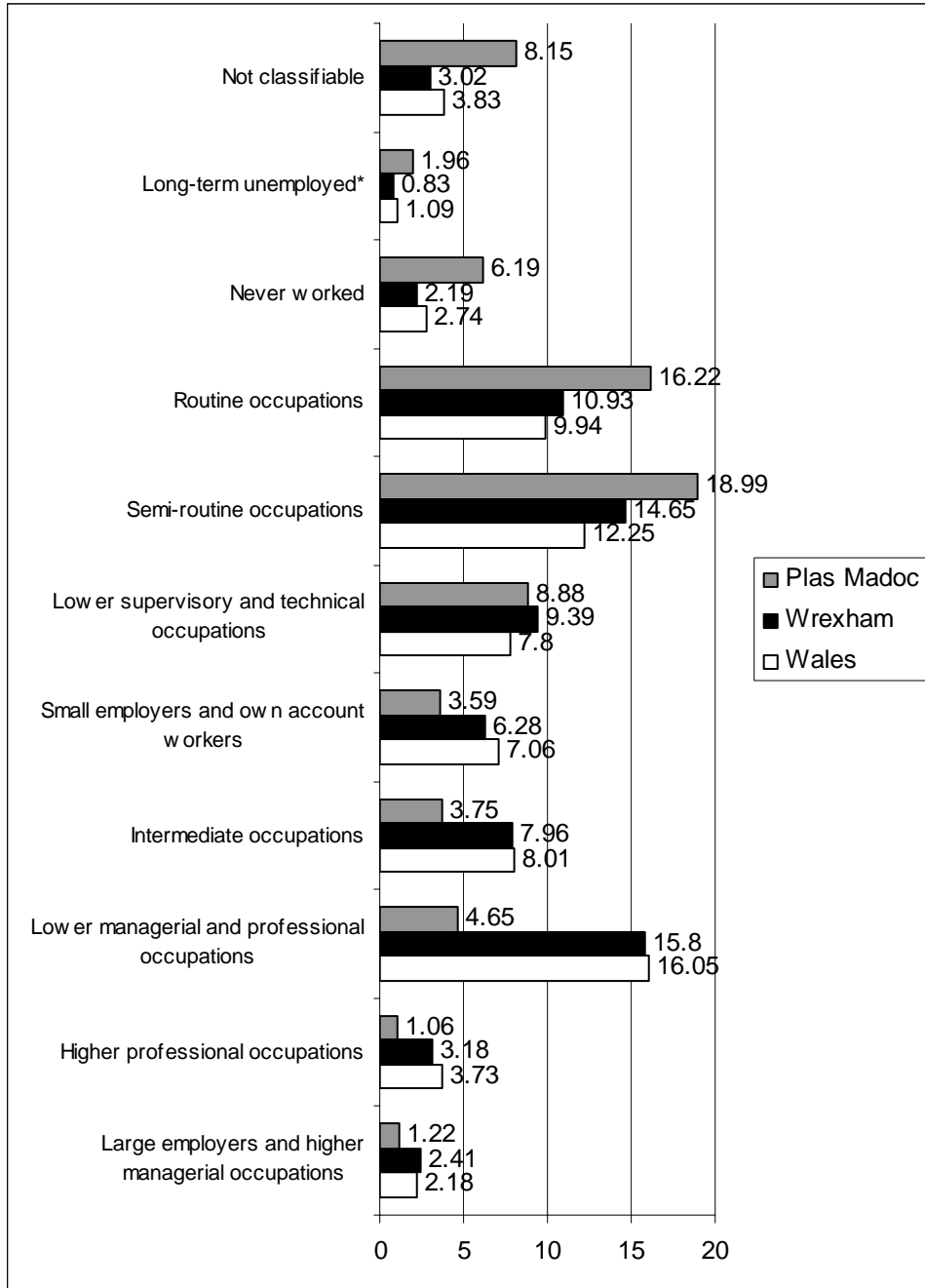


Source 2001 Census, Office of National Statistics

Socio Economic Classification

Plas Madoc residents are most likely to work in routine (16%) and semi-routine (19%) jobs. Compared with Wrexham and Wales as a whole, Plas Madoc has far fewer residents in lower managerial or professional occupations.

Table 3.1.8: Socio-economic classification of residents

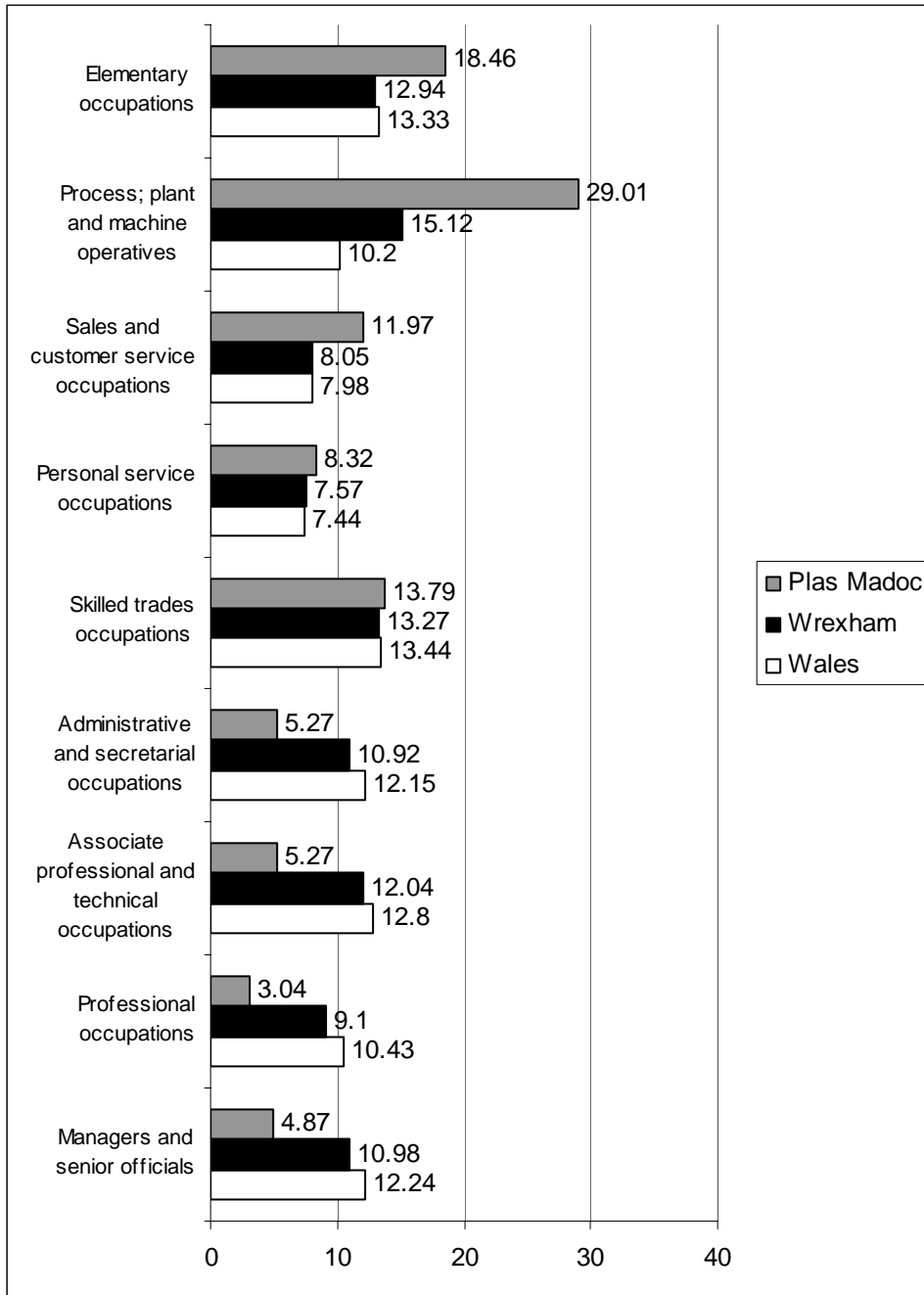


Source: National Statistics, 2001 Census of Population

Occupation Groupings

The graph below tells a similar story to the one before. Plas Madoc has a higher percentage of its residents in elementary occupations and process, plant and machine operatives, than in Wrexham and Wales. Whilst they have less in professional occupations and managers and senior official roles.

Table 3.1.9: Occupation of residents

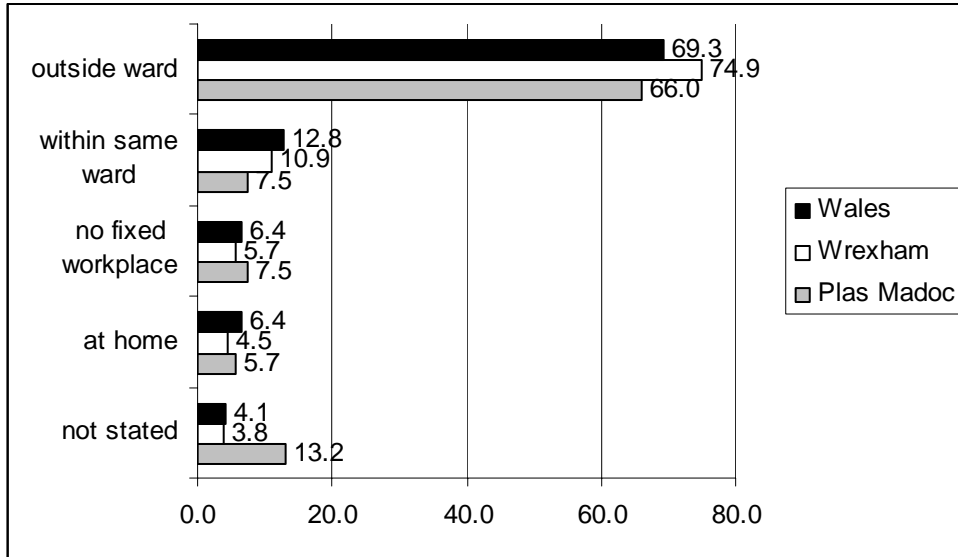


Source 2001 Census, Office of National Statistics

Location of Employment

Over 66% of Plas Madoc, residents work out side of their ward. The distribution of where Plas Madoc's residents work is very similar to that of Wrexham and Wales.

Table 3.1.10: Location of employment



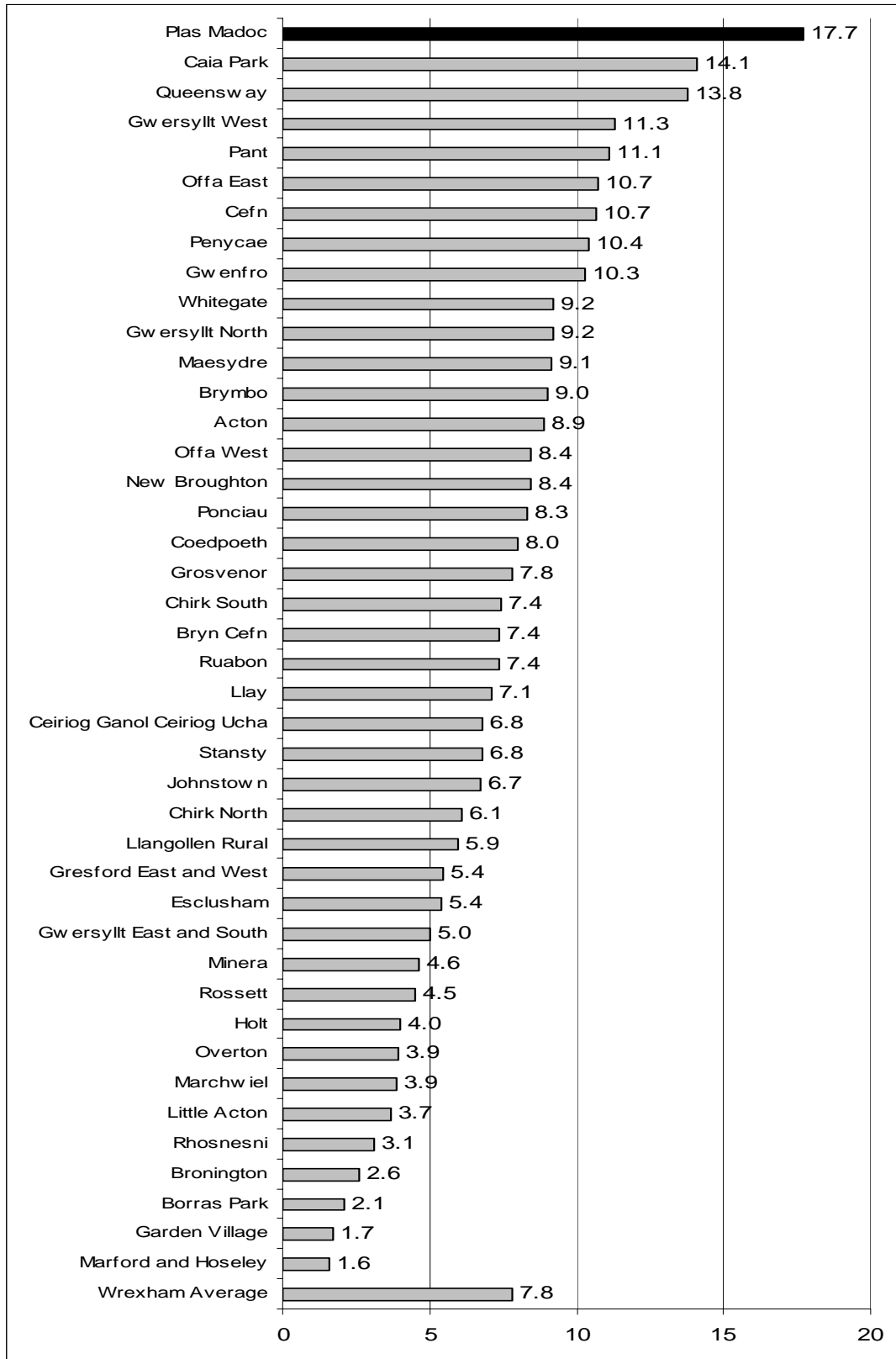
Source: National Statistics, 1991 Census of Population

Income support

Income Support (IS) is a non-contributory benefit. From October 1996, the Jobseeker's Allowance replaced IS for unemployed people. In general IS is now only available to people who are not required to be available for work, such as pensioners, lone parents, sick and disabled people. Income support is claimed by those who cannot work. Wrexham has 9,725 claimants for income support. The area average is 232 per ward.

Plas Madoc has the highest percentage of individuals claiming Income Support at 17.7 which is almost three times the Wrexham average (7.8%)

Table 3.1.11: Percentage of residents claiming Income Support by ward



Source:

National Statistics, Neighbourhood Statistics, Information Centre Information and Analysis Directorate Department for Work and Pensions, 2000
 Ward population estimates 2000. Wrexham County Borough Council

Businesses within Plas Madoc

There are only five businesses that are VAT registered in Plas Madoc. All of these businesses employ between 1-49 staff. Compared to the other wards in Wrexham and it is clear that Plas Madoc is lacking business activity.

Table 3.1.12: Number VAT registered businesses in Wrexham by ward and size

Area	With 1 to 49 Employees	With 50 to 249 Employees	With 250 or more Employees	Total
Acton	10	0	0	10
Borras Park	35	0	0	35
Bronington	190	0	0	195
Brymbo	30	0	0	30
Bryn Cefn	30	0	0	30
Caia Park	60	0	0	60
Cefn	65	0	0	70
Ceiriog Ganol Ceiriog Ucha	125	0	0	125
Chirk North	20	0	0	20
Chirk South	60	0	0	60
Coedpoeth	60	0	0	60
Esclusham	90	5	0	95
Garden Village	35	0	0	35
Gresford East and West	70	0	0	70
Grosvenor	145	5	5	150
Gwenfro	10	0	0	10
Gwersyllt East and South	100	0	0	100
Gwersyllt North	45	0	0	45
Gwersyllt West	15	0	0	15
Holt	245	15	5	265
Johnstown	45	5	0	50
Little Acton	30	0	0	30
Llangollen Rural	40	0	0	40
Llay	85	5	0	90
Maesydre	30	0	0	30
Marchwiel	110	0	0	110
Marford and Hoseley	45	0	0	45
Minera	70	0	0	75
New Broughton	50	0	0	50
Offa East	85	0	0	85
Offa West	100	5	0	105
Overton	165	0	0	165
Pant	10	0	0	10
Penycae	30	0	0	30
Plas Madoc	5	0	0	5
Ponciau	80	0	0	80
Queensway	30	0	0	30
Rhosnesni	25	0	0	30
Rossett	125	5	0	130
Ruabon	65	0	0	65
Stansty	25	0	0	25
Whitegate	25	0	0	25

Source: National Statistics, Inter-Departmental Business Register

3.2 Housing, Transport and Environment

Introduction

This section looks at:

- Index of Multiple deprivation
- Housing type
- Housing tenure
- Housing amenities
- Housing transactions
- Housing value
- Method of transport to work
- Car ownership

Index of Multiple deprivation

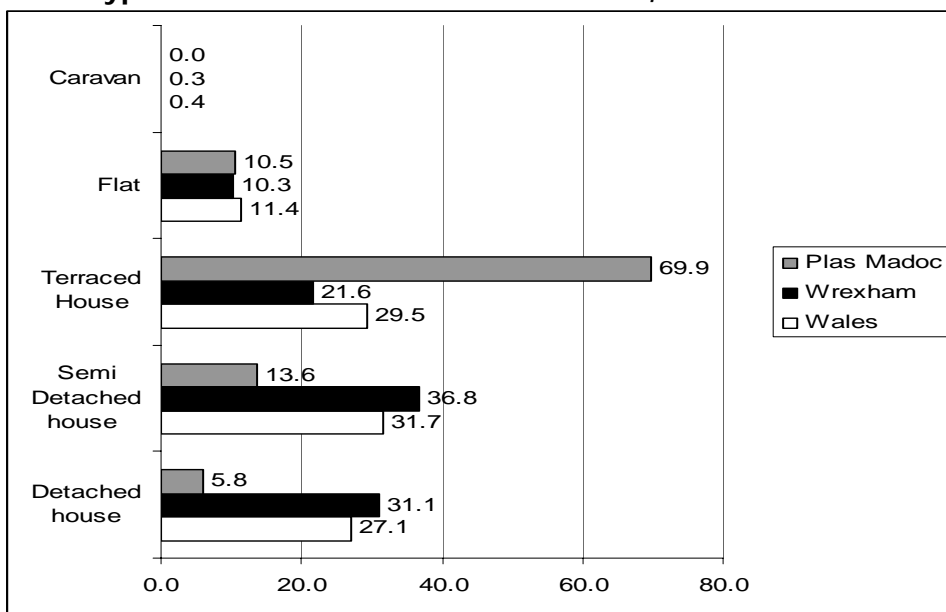
In terms of housing deprivation, positively, out of 865 wards in Wales, Plas Madoc is the 693rd most deprived.

Housing - Type

According to the 2001 Census of Population, there are currently 873 households in Plas Madoc. This has dropped since the 1991 Census where there were reported to be 924 households. Of the 873 households, 762 (87%) were occupied and 111 (13%) were vacant.

The following show what type of housing Plas Madoc residents live in. A far greater percentage of Plas Madoc residents live in terraced housing than is the case in Wrexham and Wales as a whole. When compared to Wrexham and Wales only a small percentage of Plas Madoc residents live in detached housing.

Table 3.2.1: Type of accommodation in Plas Madoc, Wrexham and Wales (%)

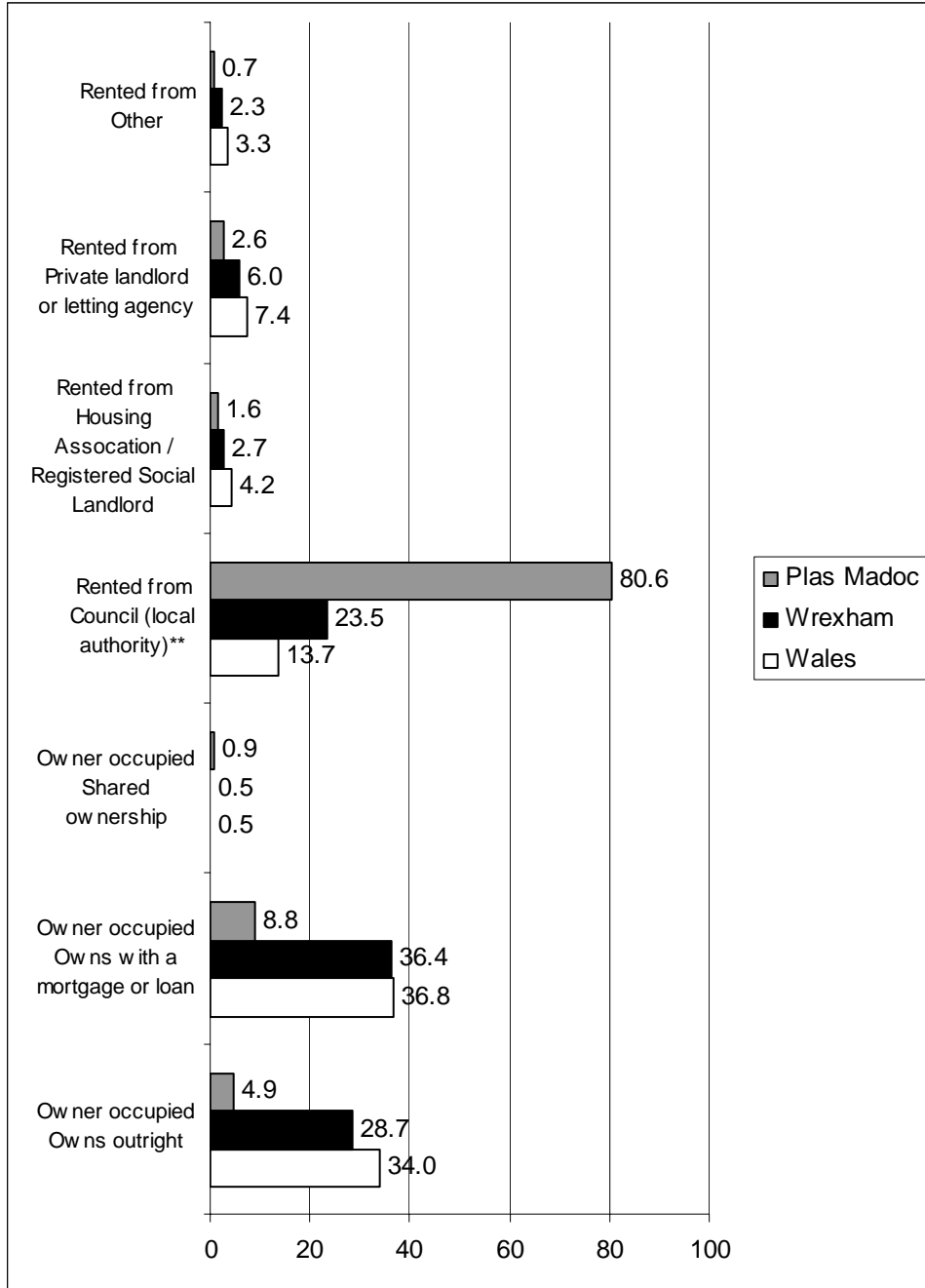


Source: National Statistics, 2001 Census of Population

The graph below details the tenure of housing in Plas Madoc and compares it with Wrexham and Wales as a whole. The majority of houses in Plas Madoc are rented from the local authority (81%). This is a lot higher than Wrexham and Wales as a whole. Plas Madoc also has a lower than average number of owner occupied houses.

Housing - Tenure

Table 3.2.2: Tenure of residents within Plas Madoc, Wrexham and Wales (%)

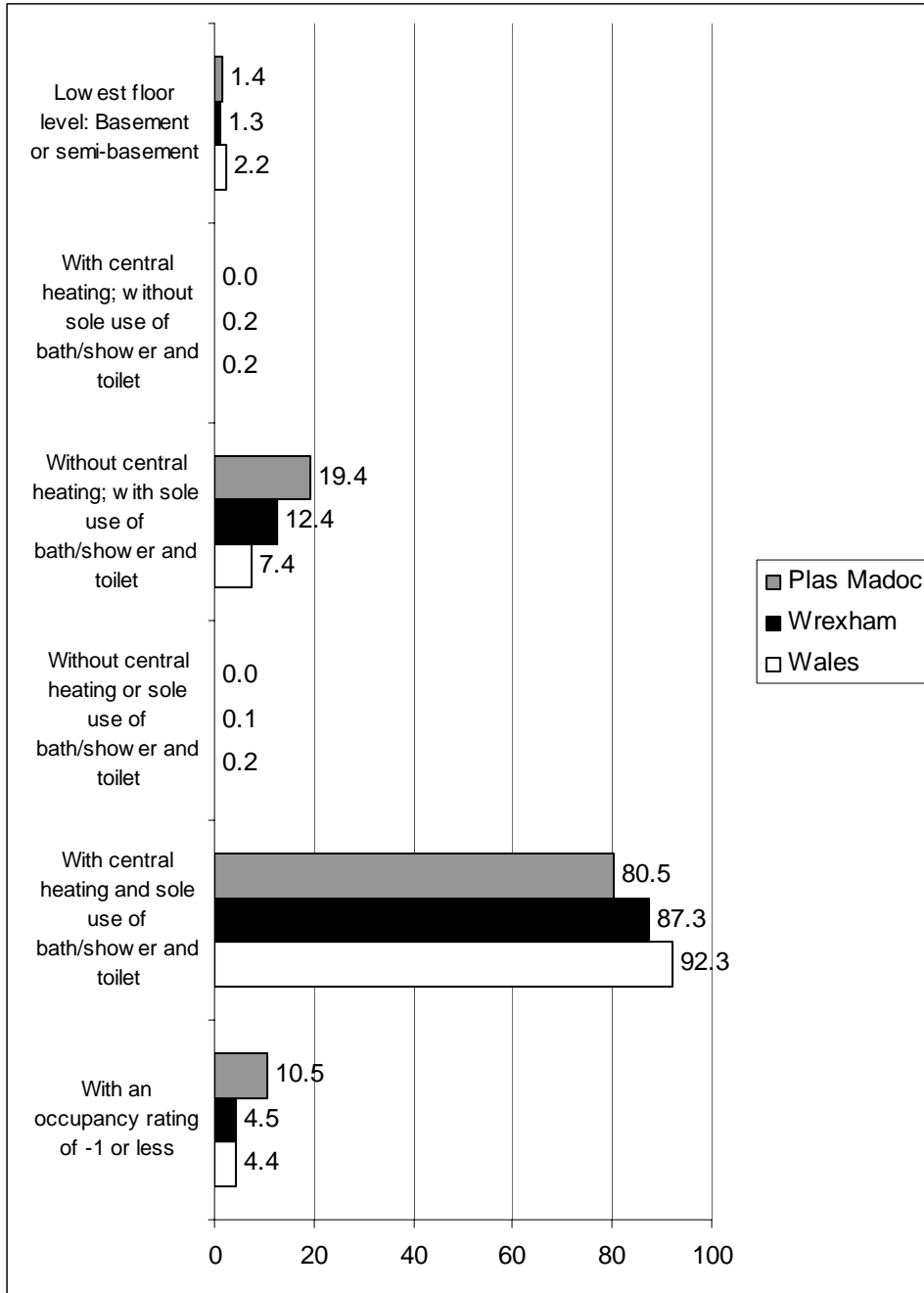


Source: National Statistics, 2001 Census of Population

Housing – amenities

The following chart compares the nature of the housing stock in Plas Madoc with the rest of Wrexham and Wales. Plas Madoc has a higher percentage of houses without central heating, (but with the use of bath and toilet) than Wrexham and Wales do.

Table 3.2.3: Amenities available in houses



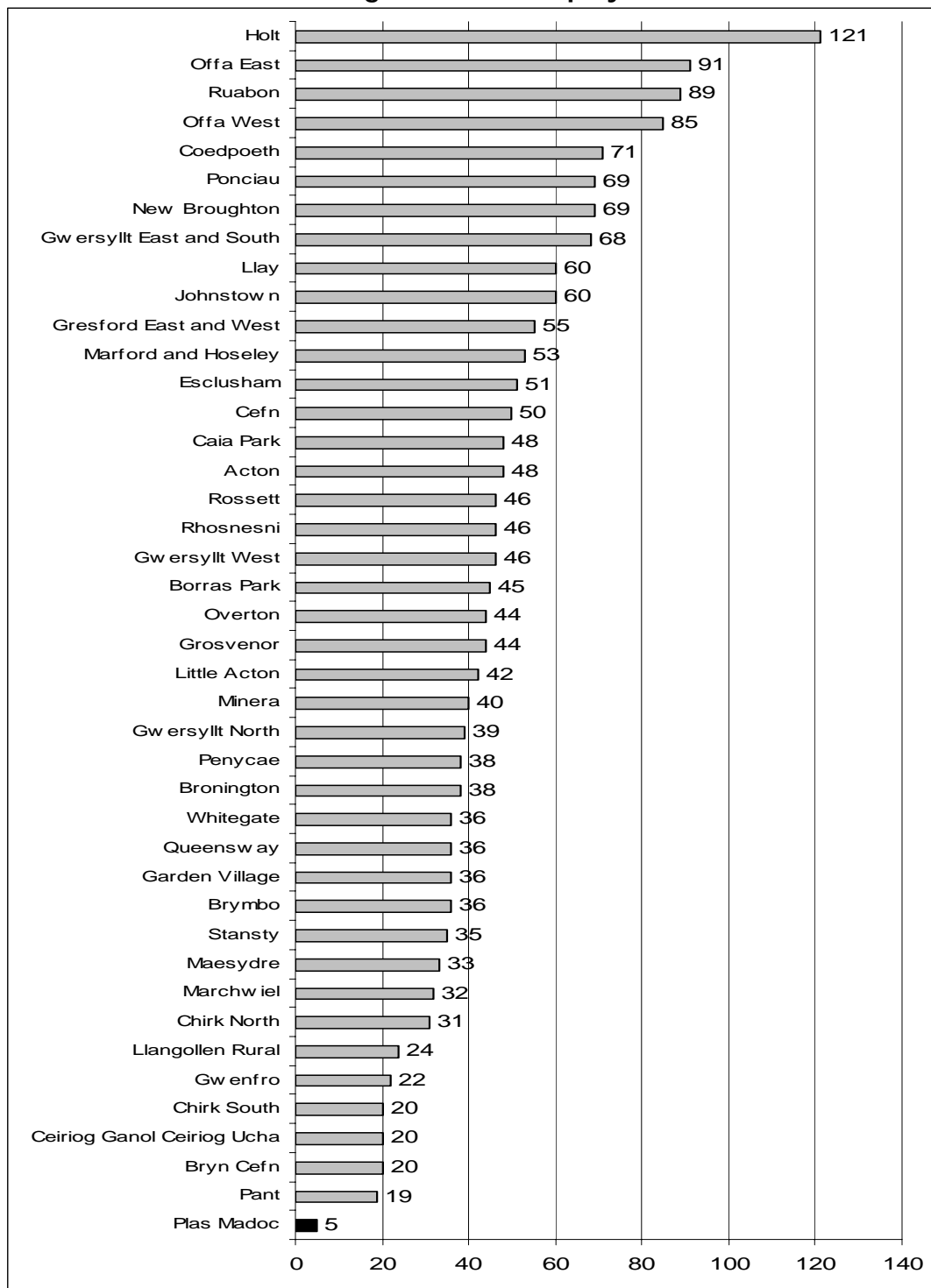
Source: National Statistics, 2001 Census of Population

Housing – transactions

In Wales as whole there were roughly 60,000 housing transactions in 2001 with almost 3000 taking place in Wrexham.

In Plas Madoc there were only 5 changes of housing ownership in 2001. This is the lowest number of any Wrexham ward and compares with a Wrexham average of 47.

Table 3.2.4: Number of changes in ownership by ward



Source: National Statistics, The Land Registry 1991

Housing – value

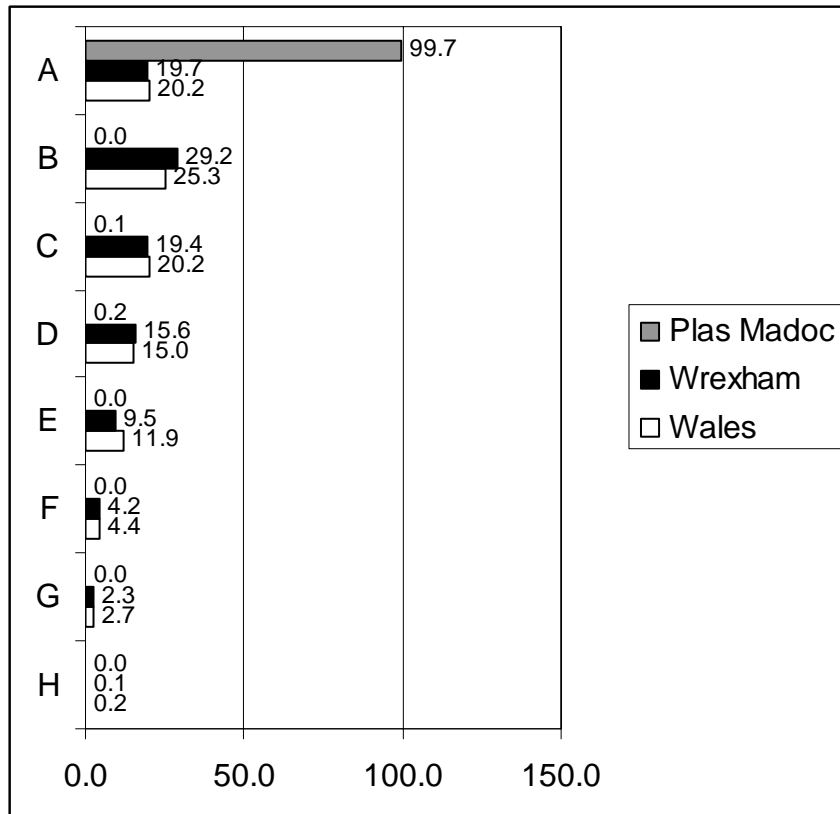
The graph below indicate the percentage of properties in Plas Madoc, Wrexham and Wales that fit into each council tax band. Council tax bands were worked out according to the value of the property in 1991. Although property prices have risen significantly since 1991, this is still a good indication of the proportion of properties that are considered to be of a low value and the proportion that are considered to be of a high value.

Key to bands Council tax bands

Band	Value of house in 1991
A	Up to £30,000
B	£30,001 - £39,000
C	£39,001 - £51,000
D	£51,001 - £66,000
E	£66,001 - £90,000
F	£90,001 - £120,000
G	£120,001 - £240,000
H	£240,00 and above

Clearly nearly every house in Plas Madoc is valued at less than £30,000. This is in sharp contrast to the wide distribution of property value within Wales and indeed Wrexham itself.

Table 3.2.5: Percentage of houses falling into various council tax bands in Plas Madoc, Wrexham and Wales

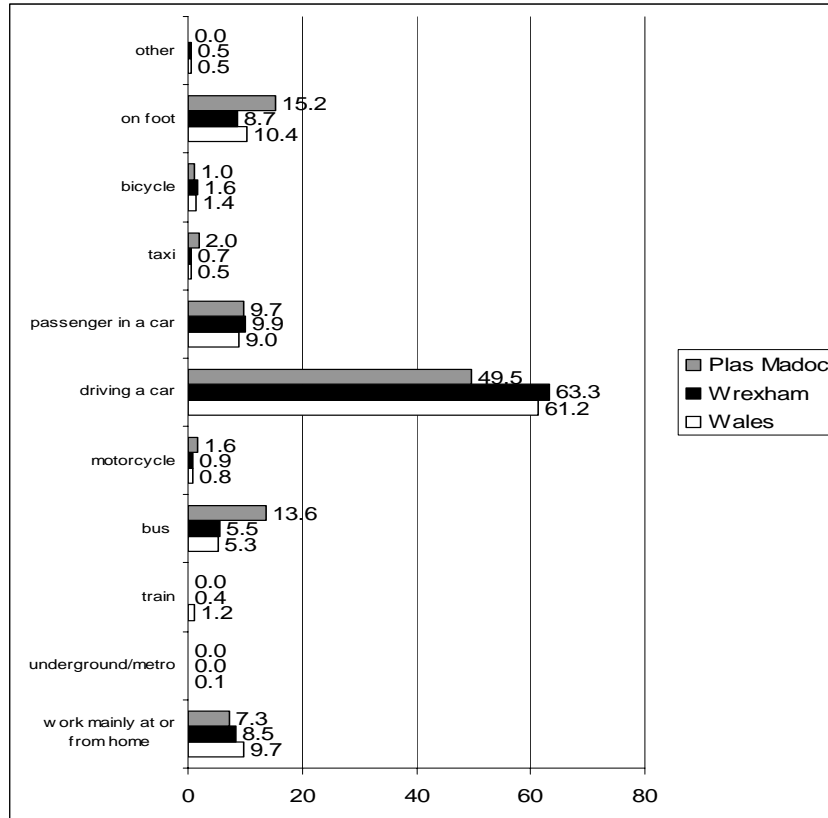


Source: National Statistics, Valuation Office Agency 1991

Transport

The following table shows the differing ways in which people travel to work. A greater percentage of Plas Madoc residents walk to work than is the case in Wrexham and Wales, whilst a smaller proportion drive a car.

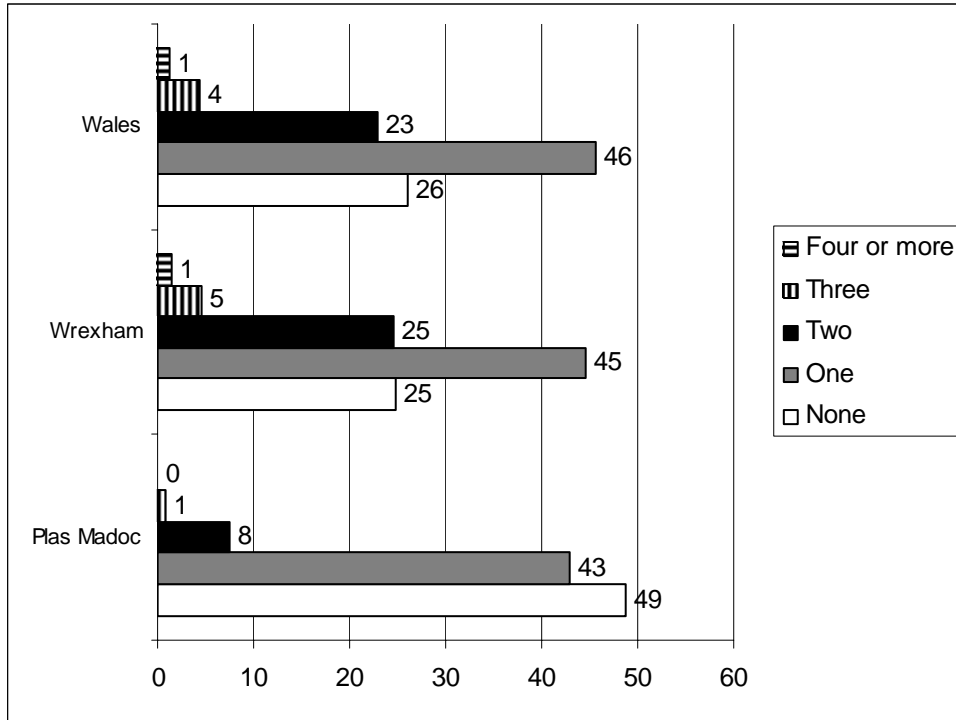
Table 3.2.8: Method of transport to work (%)



Source: National Statistics, 2001 Census of Population

Ownership of private transport is often a sign of affluence. In Plas Madoc just under half of households (49%) do not own a car. Plas Madoc has a much higher percentage of household without a car than in both Wrexham and Wales as a whole. 49 % compared to 25% and 26% in Wrexham and Wales respectively.

Table 3.2.9: Number of Cars Owned by Households (%)



Source 2001 Census, Office of National Statistics

3.3 Community Safety

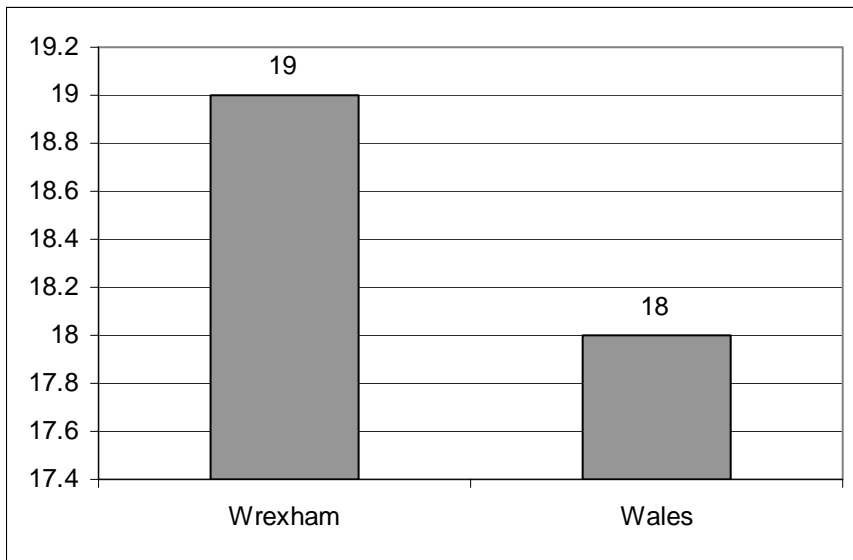
Introduction

This section examines the number of different criminal offences that have occurred in Wrexham and Wales per 1000 population or household. Unfortunately it has not been possible to obtain data for Plas Madoc as a whole. In order to remedy this shortfall, data will be obtained via the residents consultation that will allow comparison with the data obtained for Wrexham and Wales as a whole.

Violent offences

The figure below details the number of violent offences that have occurred per 1000 population in Wales and Wrexham. As can be seen in Wrexham 19 offences have occurred per 1000 population. This is only slightly higher Wales as a whole.

Table 3.3.1: Number of violent offences against a person per 1000 persons

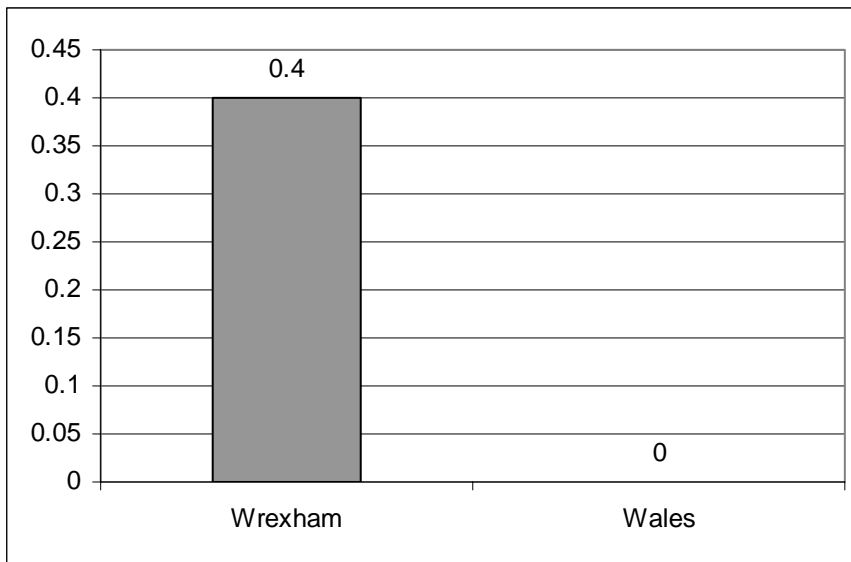


Source: Home Office

Robbery offences

Due to the fact the data for Wales was rounded to the nearest whole number, the number of robbery offences per 1000 population was recorded as zero. This of course does not mean that robbery has not occurred, just that the proportion is very small and less than 0.5 per 1000 population. The number of robbery offences in Wrexham as a whole was recorded as 0.4 per 1000 population.

Table 3.3.2: Number of robbery offences per 1000 persons

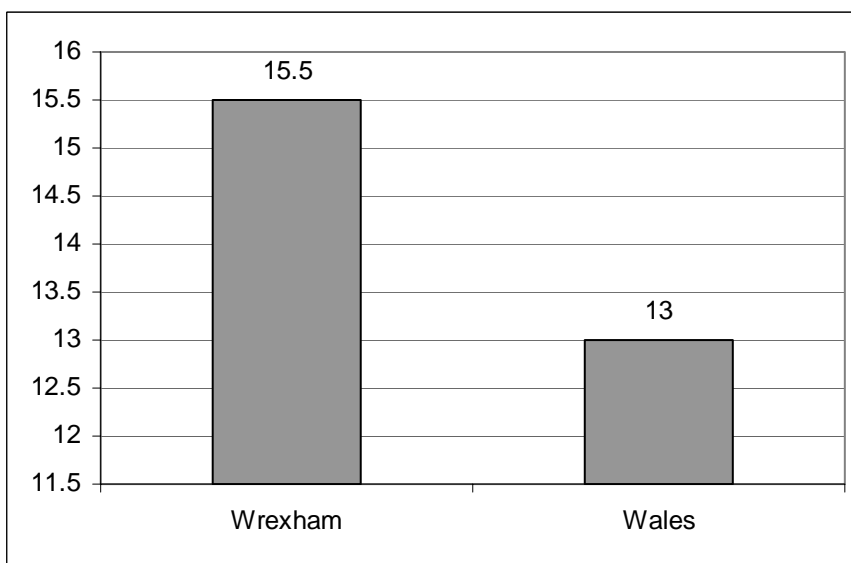


Source: Home Office

Burglary offences

Overall there were 15.5 burglary offences per 1000 households in Wrexham, this is higher than the number for Wales as a whole which stands at 13 per 1000 households.

Table 3.3.3: Number of burglary offences per 1000 households

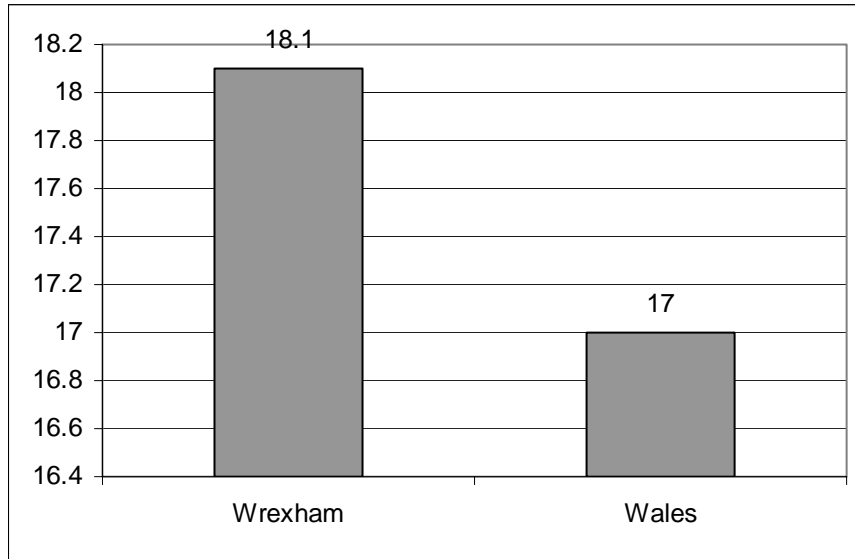


Source: Home Office

Theft of or from a motor vehicle

In Wrexham there was 18.1 thefts of or from a motor vehicle. This slightly higher than Wales as a whole which stands at 17 per 1000 population.

Table 3.3.4: Number of thefts of or from a motor vehicle per 1000 persons



Source: Home Office

3.4 Health and Wellbeing

Introduction

This section examined:

- The Index of Multiple deprivation
- Evaluation of health
- Limiting long-term illness
- Severe disablement allowance
- Incapacity benefit

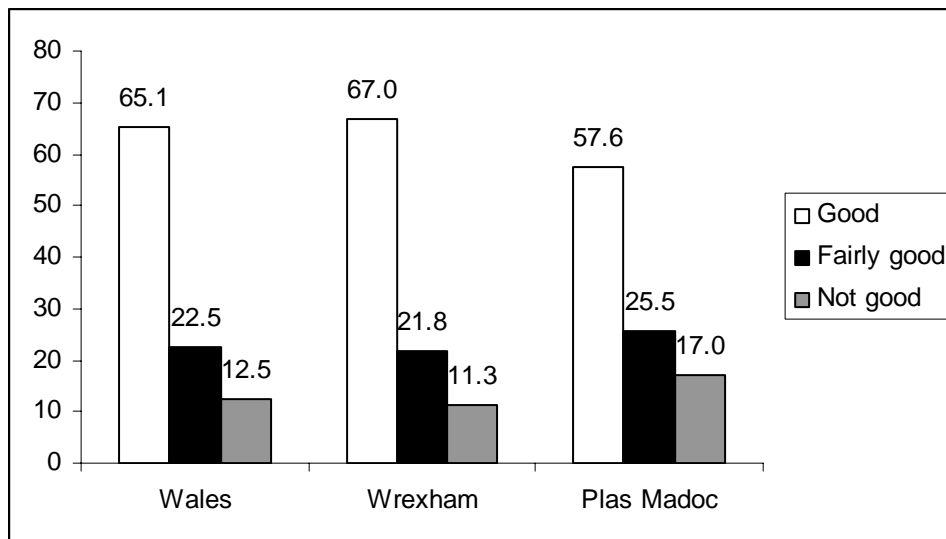
The Index of Multiple deprivation

The Index of Multiple Deprivation ranks Plas Madoc as the 23rd most deprived ward in Wales when it comes to health.

Evaluation of health

In the 2001 census asked respondents to evaluate their own health. The chart below reports how people reported the state of their health in Plas Madoc and allows comparison between that area and Wrexham and Wales in general. Only 58% of Plas Madoc residents rated their health as “good” compared to 65% and 67% of Wales and Wrexham respectively. 17% of Plas Madoc’s population rated their health as “not good”, higher percentage than in Wrexham and Wales.

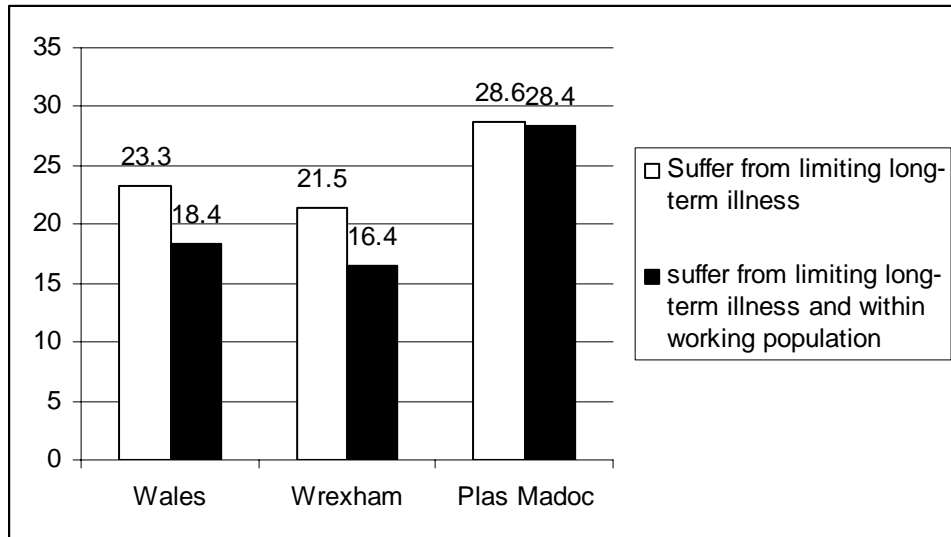
Table 3.4.1: How residents rated their health (%)



Source: National Statistics, 2001 Census of Population

The following graph shows the proportion of residents in Plas Madoc, Wrexham and Wales with a limiting long term illness. Overall, 29% of Plas Madoc’s residents stated they were suffering from a limiting long-term illness. This is higher than both Wrexham and Wales as a whole. More worryingly is the fact that the majority of Plas Madoc residents with a limiting long-term illness are from within the working age population.

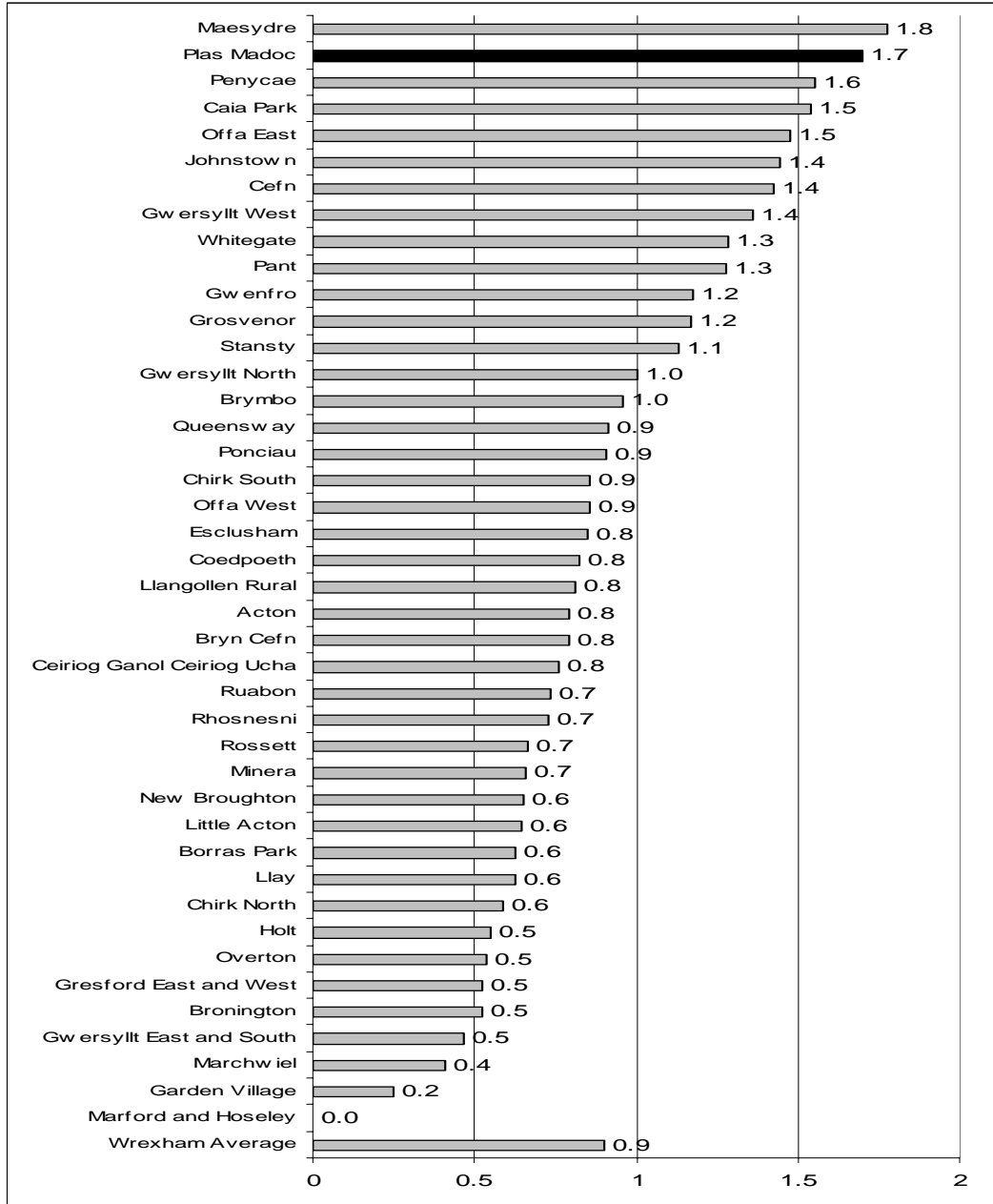
Table 3.4.2: Proportion of population with limiting long-term illness



Source: National Statistics, 2001 Census of Population

A poor level of health is confirmed by the graph below that shows the proportion of Plas Madoc residents who claim severe disablement allowance.

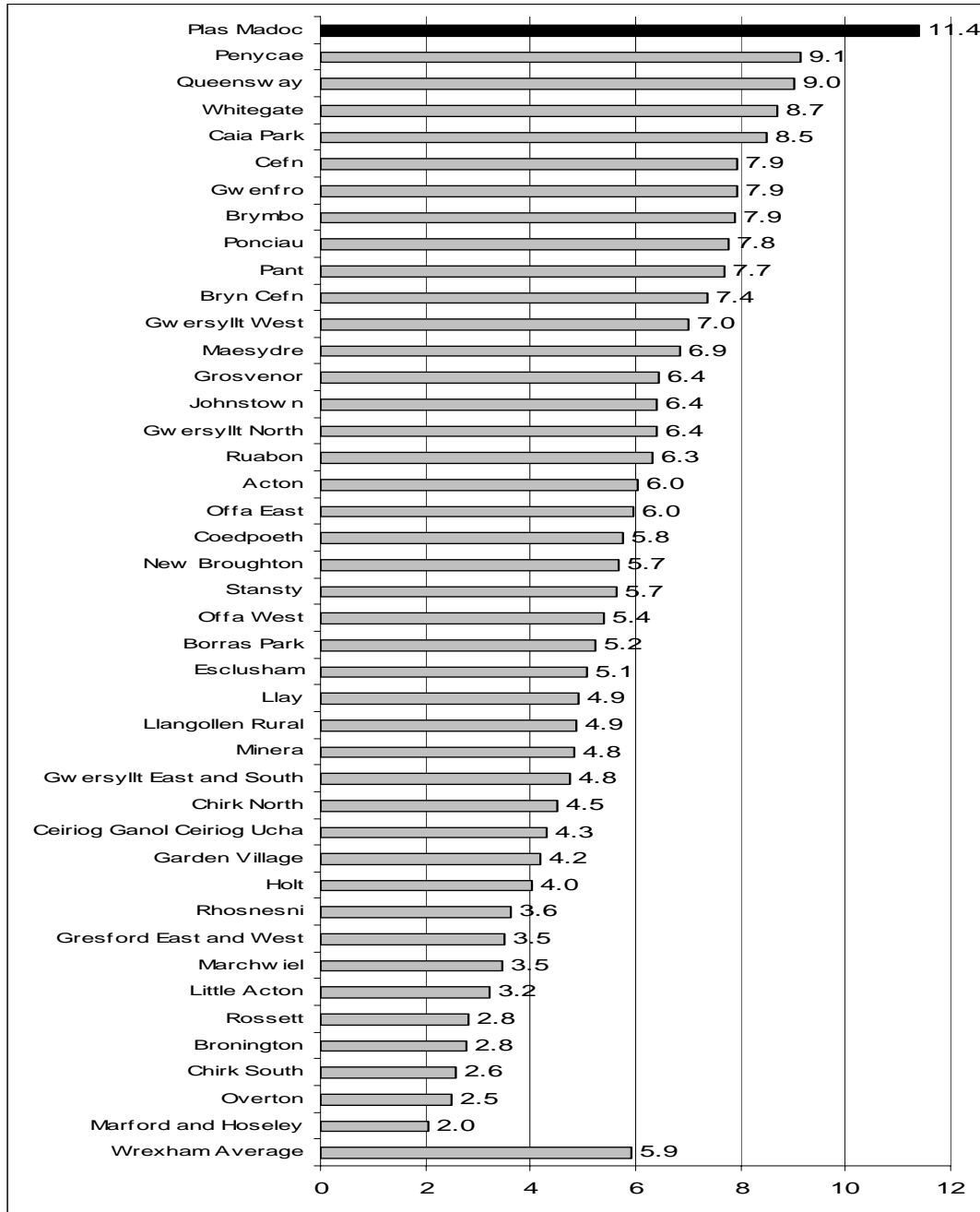
Table 3.4.3: Percentage of population with Wrexham’s wards who claim severe disablement allowance.



Source: National statistics, Severe Disablement Allowance Claimants, August 2000, Wrexham MBC, Mid-year population estimates, 2000.

Incapacity benefit is claimed by those who are unable to work for physical or mental reasons. A high incapacity benefit claimant rate would indicate that the areas population is relatively unwell and suffering poor health. Plas Madoc has the highest percentage of incapacity benefit claimants in Wrexham.

Table 3.4.4: Percentage of residents who claim incapacity benefit



Source: of National Statistics, Neighbourhood statistics Information Centre Information and Analysis Directorate Department for Work and Pensions 2000
Wrexham MBC, Mid-year population estimates, 2000.

3.5 Active Communities

Introduction

Information on the following can be found in this section:

- Population breakdown
- Births
- Deaths
- Ethnic group

Population

The 2001 census reported that the population in Plas Madoc is 1833. This is a 9% drop since 2000, and an overall fall since 1991 of 20%.

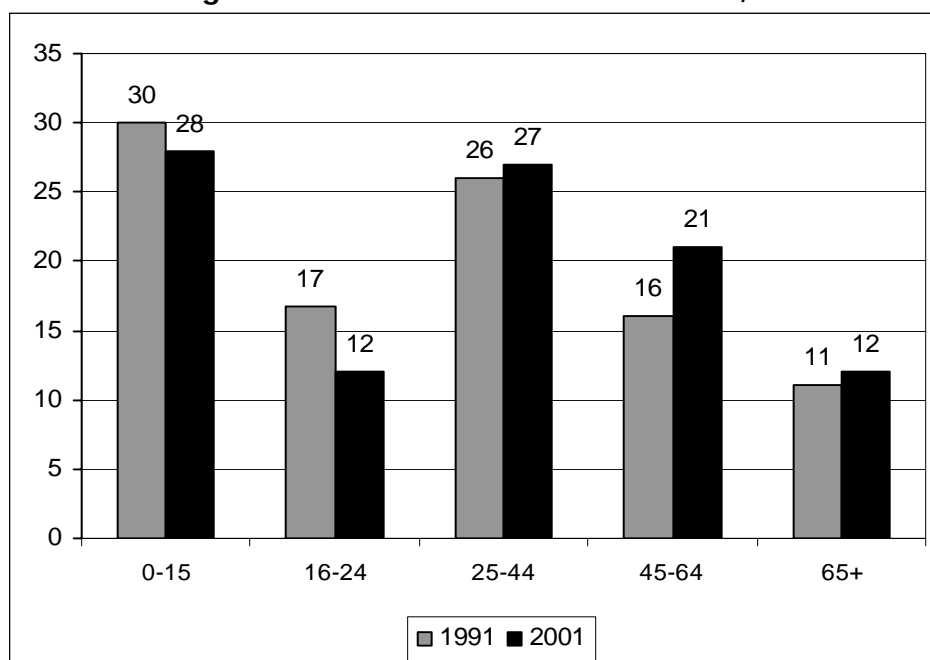
Table 3.5.1: Population in Plas Madoc by year

Year	Population	% Change
1991	2370	NA
2000	2060	-13
2001	1883	-9
1991 to 2001	2370 to 1883	-20

Source: National Statistics, 1991 Census of Population, 2002 Census of Population & Wrexham MBC

The graph below shows the age structure for Plas Madoc in both 1991 and 2001. The age structure has changed since 1991. In 1991 under 16's were the largest age group with 25 – 44 year olds being the second largest. In 2001 this has reversed. What has also changed is that the 45 – 64 year old group has grown from 16 % to 21%.

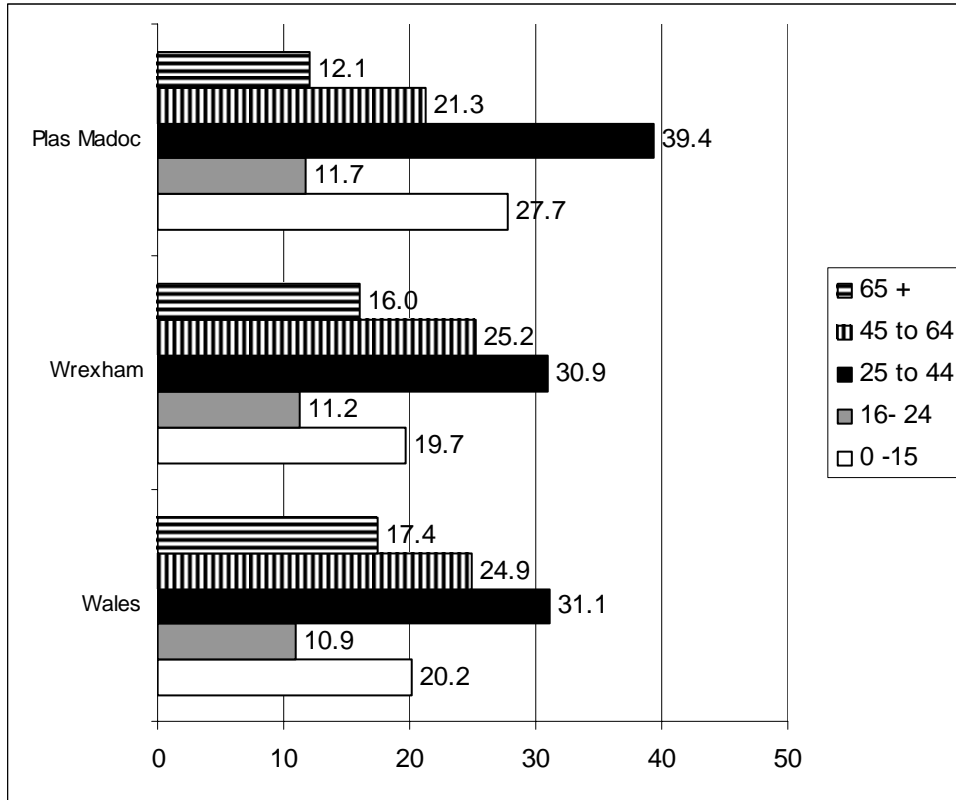
Table 3.5.2: Age structure of Plas Madoc residents, 1991 and 2001



Source: National Statistics, 1991 Census of Population, 2001 Census of Population

The graph below compares the age structure in Plas Madoc with the structure in Wrexham and Wales as a whole. As can be seen, Plas Madoc has a larger proportion of residents aged 0-15 and a smaller proportion aged 65+. This may suggest that Plas Madoc residents are less likely to live as long as Wrexham and Wales as a whole.

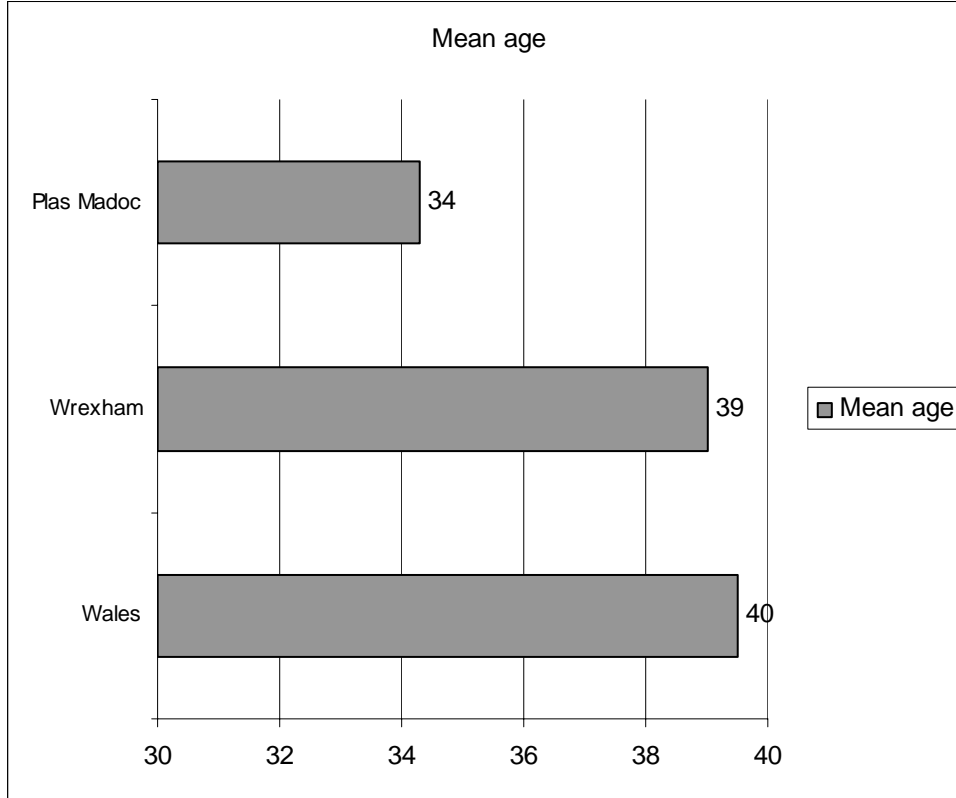
Table 3.5.3: Age distribution in Plas Madoc, Wrexham and Wales (%)



Source: National Statistics, 2001 Census of Population

The graph below confirms the suggestion that Plas Madoc residents die at a younger age. The graph shows the mean (average) age of residents. As can be seen, Plas Madoc has a slightly lower mean age when compared to Wrexham and Wales as a whole.

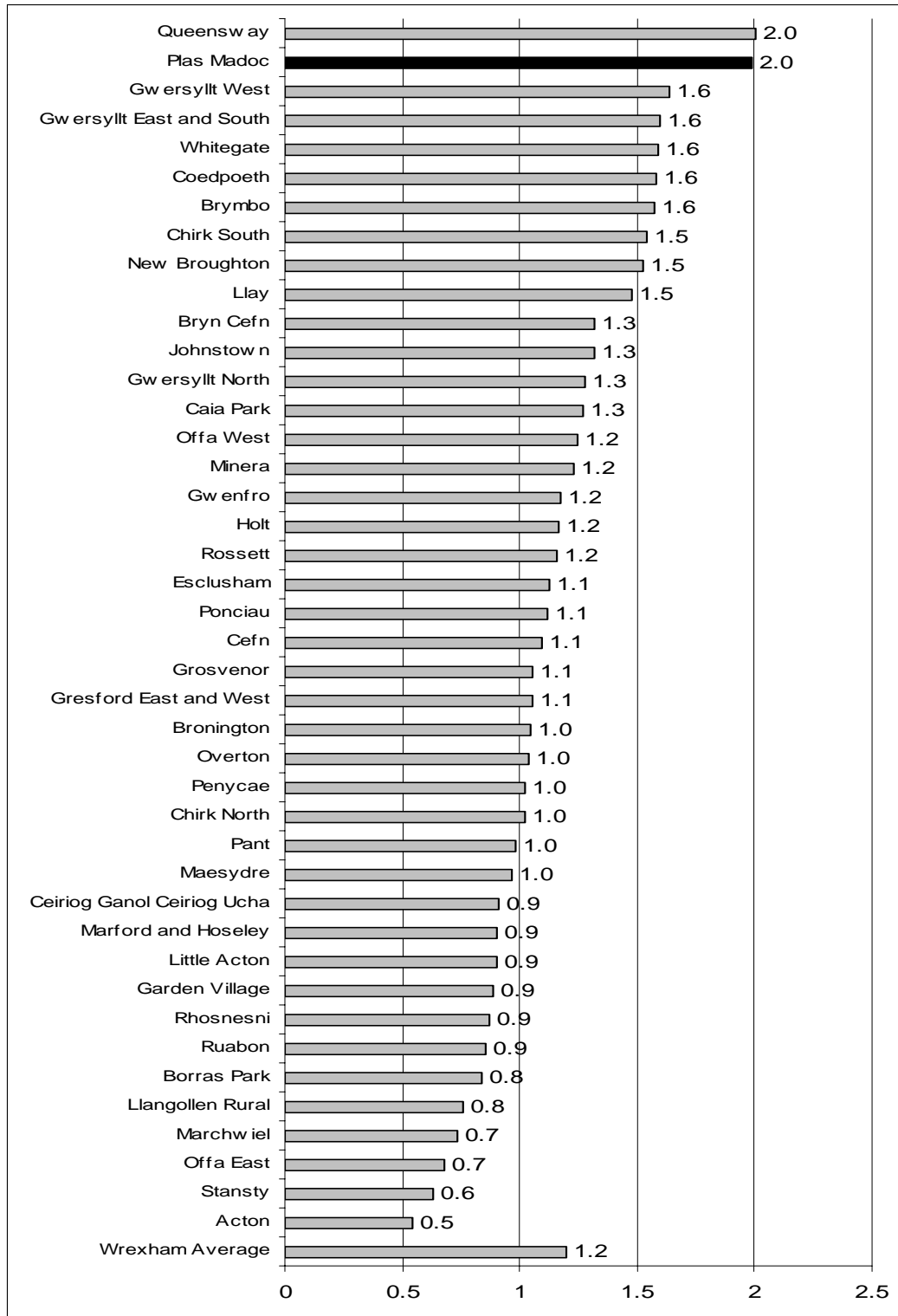
Table 3.5.4: Mean ages



Source: National Statistics, 2001 Census of Population

The chart below indicates the number of births as a percentage of the total ward population. As can be seen from the chart, Plas Madoc has a relatively high birth rate.

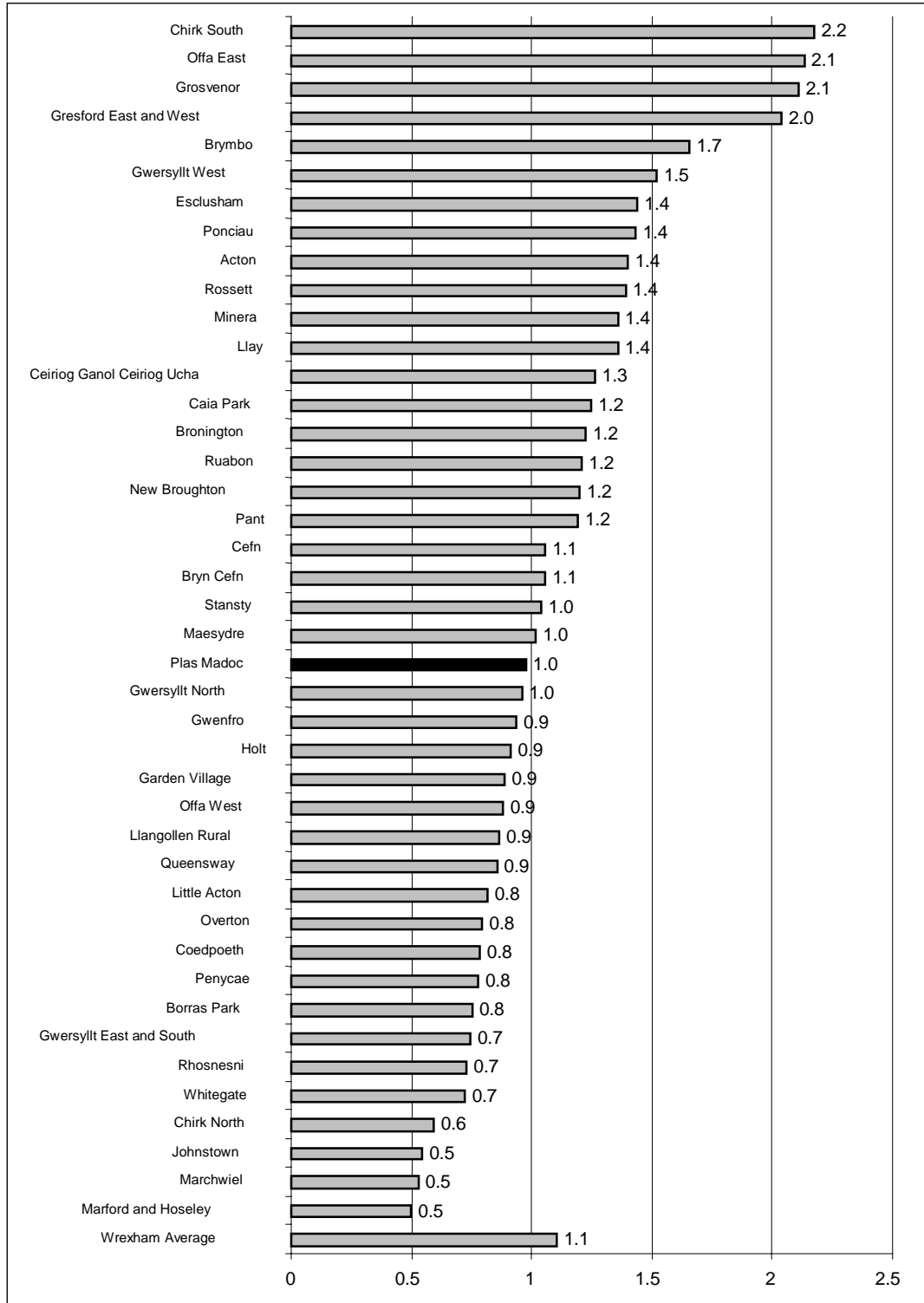
Table 3.5.5: Number of births as a percentage of Plas Madoc residents



Source: National Statistics 1998, Wrexham MBC

A high death rate often indicates that the area has an ageing population. Plas Madoc has an average death rate for the Wrexham area. This is a reflection of the wards relatively young population.

Table 3.5.6: Number of deaths as a percentage of Plas Madoc residents

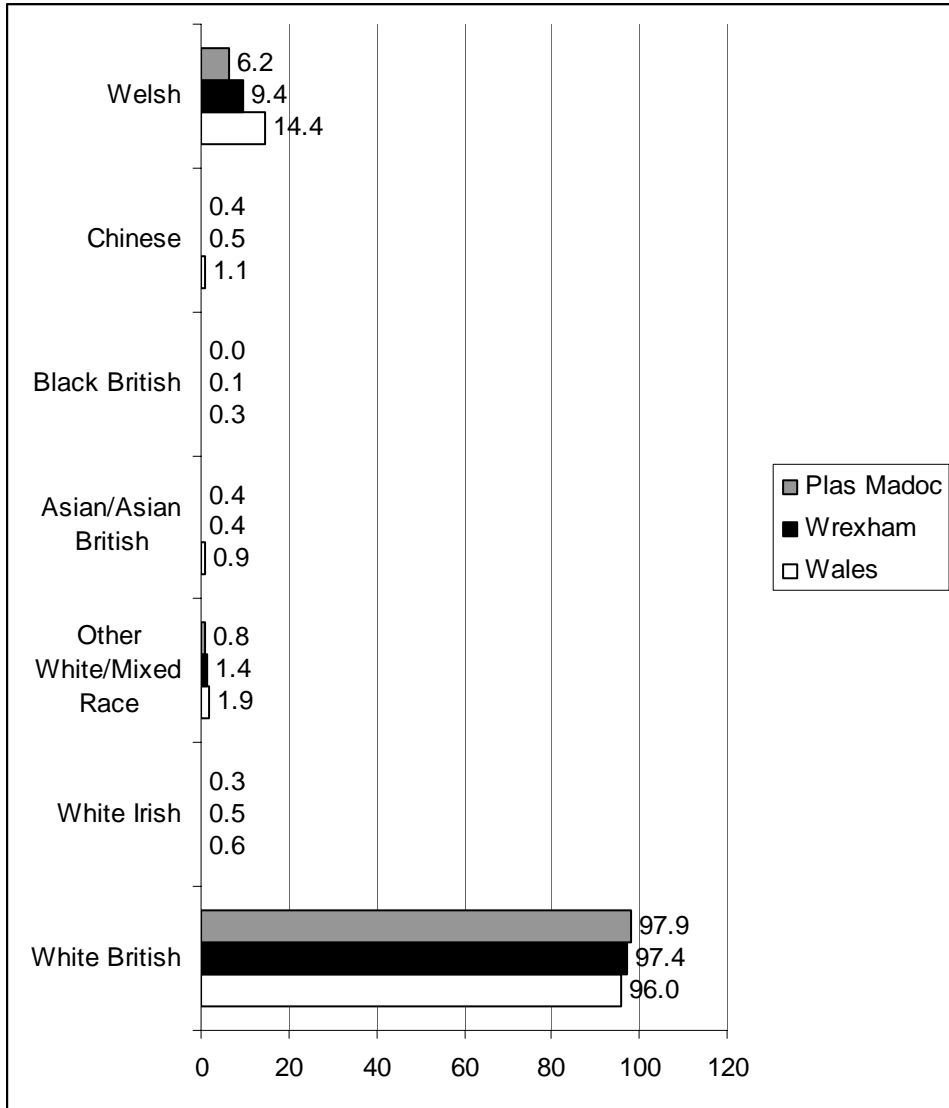


Source: Office of National Statistics 1998, Wrexham MBC

Ethnic Group

The following chart shows which ethnic group people in Wales, Wrexham and Plas Madoc identify themselves as. As with Wrexham and Wales as a whole, Plas Madoc has a very low minority ethnic population. People in Plas Madoc are less likely to identify themselves as Welsh compared to the Wrexham and National Average and more likely to identify themselves as White British.

Table 3.5.7: Ethnic breakdown of population (%)

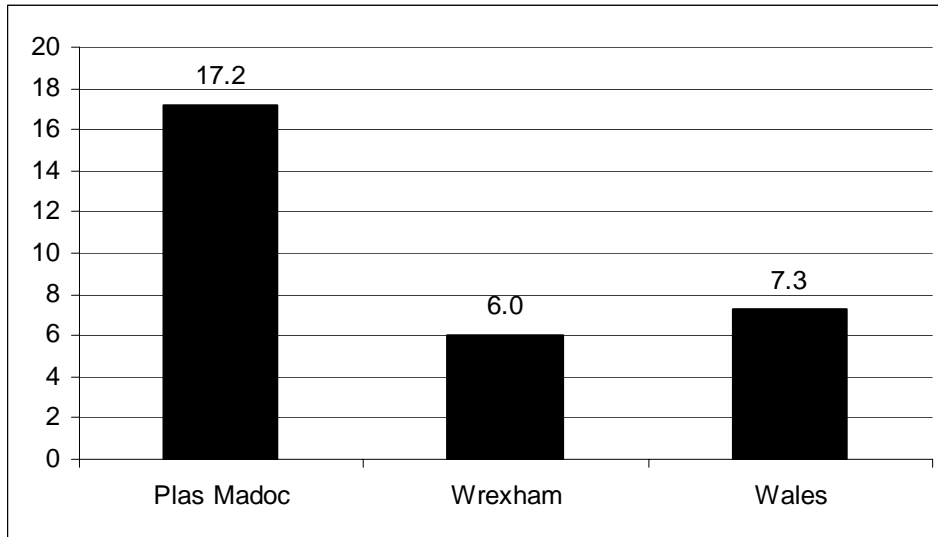


Source: National Statistics, 2001 Census of Population

Lone Parent Households

The following table shows the percentage of households headed by lone parents in Plas Madoc, Wrexham and Wales. Plas Madoc has a dramatically higher percentage of lone parent households (17.2%) than in the case in Wrexham and Wales (6.0% and 7.3% respectively).

Table XX Percentage of Lone Parent Households



Source: National Statistics, 2001 Census of Population

3.6 Education and Life Long learning

Introduction

This section looks at:

- Index of Multiple Deprivation
- Highest qualification
- Numeracy and literacy rates

Index of Multiple Deprivation

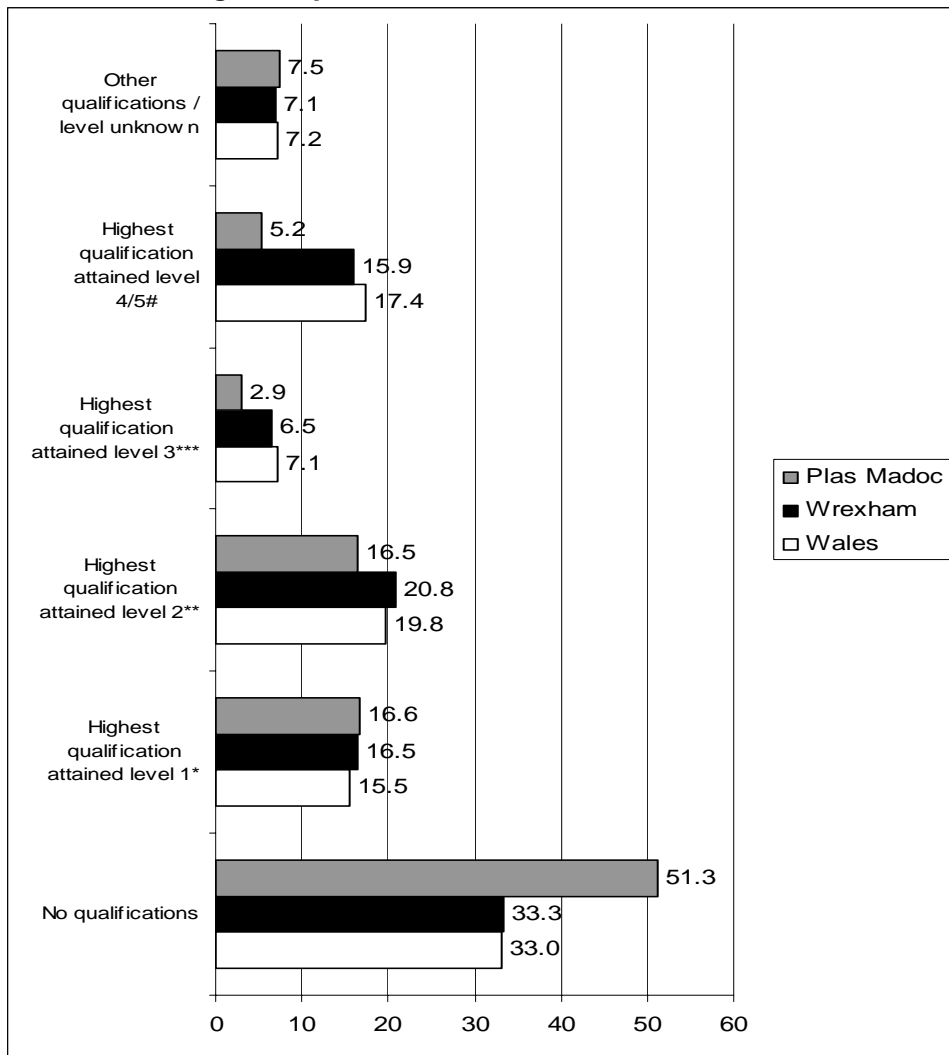
According to the Index of Multiple Deprivation, within Education, Plas Madoc is the fourth most deprived ward in Wales.

Highest qualification

The graph below shows the highest qualification level for residents of Plas Madoc, Wrexham and Wales as a whole. In terms of definitions of levels, Level five is equivalent to a higher degree, level four is equivalent to a first degree, level three is equivalent to one or more A-levels, level two is equivalent to five GCSEs grades A-C and level one is those with any qualifications that are below five GCSEs A-C grade.

Just over half of Plas Madoc residents have no qualifications. This is substantially higher than Wrexham and Wales as a whole where only 33% stated they had no qualifications. Only five per cent of the population have level 4/5 qualifications compared to 16% in Wrexham and 17% in Wales as a whole.

Table 3.6.1: Highest qualification of residents

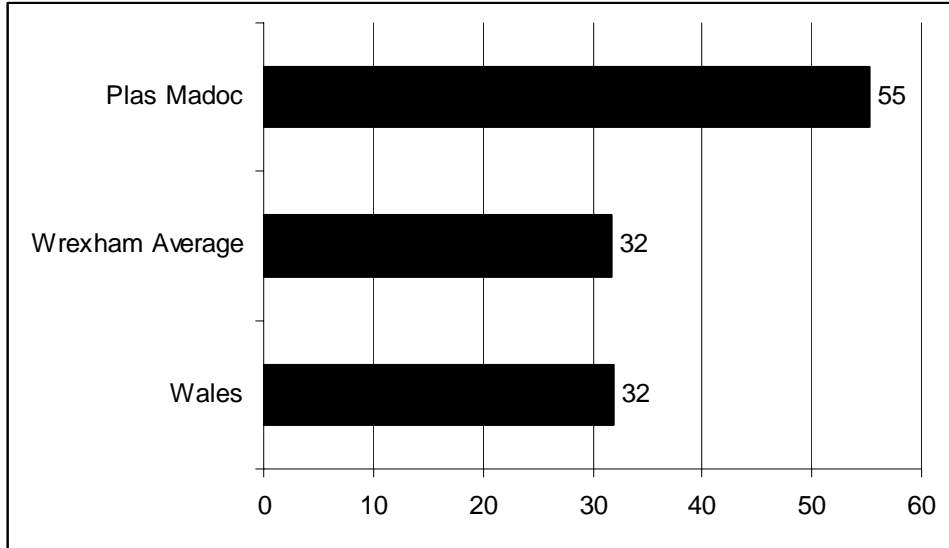


Source: National Statistics, 2001 Census of Population

The Basic Skills Agency produces data on the number of residents per ward that have low numeracy and literacy skills.

Just over half of the population in Plas Madoc are estimated to have low numeracy skills. This is a lot higher than the average for both Wrexham and Wales as a whole.

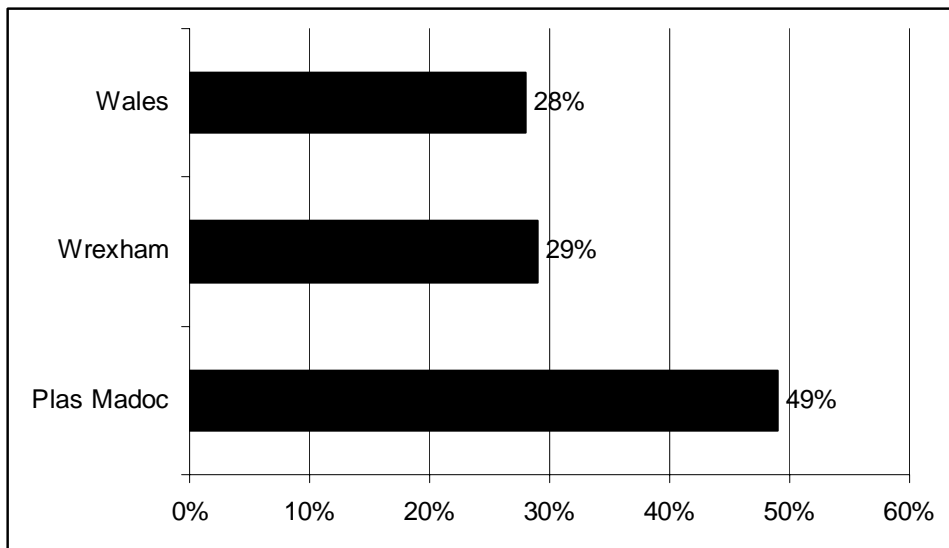
Table 3.6.2: Percentage of residents with low numeracy skills in Plas Madoc, Wrexham and Wales



Source: Basic Skills Agency 2001

Just under half (49%) of residents in Plas Madoc are classed as having low literacy skills. Again this is a lot higher than Wrexham (29%) and Wales (28%).

Table 3.6.3: Percentage of individuals who have low Literacy in Plas Madoc, Wrexham and Wales



Source: Basic Skills Agency 2001

5 Conclusions

Jobs, businesses and skills

Compared with Wrexham and Wales as a whole, Plas Madoc residents are less likely to be in work and more likely to be permanently sick or disabled, looking after home / family or unemployed.

The high number of individuals looking after home / family suggests that there is a high level of children aged 0-15 in Plas Madoc. This is confirmed by the population data. A reason for this may be a lack of effective family planning in the area. A high number of individuals looking after home / family may also suggest that there is a lack of good quality, affordable childcare in the area which would allow parents to work.

The high unemployment rate in the area suggests either there is a lack of jobs in the area, or that those that are unemployed lack the skills or motivation to gain appropriate employment.

Examining the industry and occupation of residents that are working reveals that Plas Madoc residents are more likely to work in unskilled and semi-skilled job, and less likely to work in professional occupations. Again this would indicate that either the variety of industry in the area is limited or that residents lack the appropriate skills to undertake professional jobs.

Housing, transport and environment

In terms of housing, Plas Madoc seems to lack variety. The majority of houses are terraced that are rented from the local authority. They are also most likely to be found in the lowest council tax band. A low level of ownership would suggest that residents in the area do not have the financial means purchase their own house. Houses in Plas Madoc are also less likely than Wrexham and Wales as a whole to have central heating. Not having adequate means of heating a home could have a detrimental effect residents' health.

In terms of transport, just under half of households do not own a car. This is significantly higher than the average for Wrexham Wales as a whole. This suggests that a substantial number of households do not have the financial means to afford to purchase a car.

Residents are also more likely than the average to use a bus to get to work. A lack of households with cars and large number of residents using the buses suggests that there is a demand for an efficient and cost effective public transport service in the area.

Community safety

Due to the small size of Plas Madoc it has not been possible to gain data for this area. In order to fill this shortfall, data on crimes recorded against residents will be collected at the consultation stage.

Health and wellbeing

Compared to the average in Wrexham and Wales, the community in Plas Madoc tends to be unhealthy. Just under a fifth of residents in Plas Madoc rated their health as 'not good', whilst 29% stated that they suffer from a limiting long-term illness. Examining economic activity reveals that Plas Madoc has a higher than normal amount of working age residents that are permanently sick or disabled and therefore don't work. This suggests that local health provisions is poor or that residents, compared to the rest of Wrexham and Wales, are less likely to participate in healthy living / preventative measures. As mentioned earlier, a low level of central heating within households may also have a detrimental effect on the health of residents.

Active communities

The population in Plas Madoc has dropped by 20% in the last ten years. This would indicate that residents are moving out of the area because they are unhappy with certain aspects of it.

Compared with Wrexham and Wales as a whole Plas Madoc has a higher than average proportion of children (0-15 year olds) and those aged 25-44, but a lower than average number of OAPs (65+) and those aged 45-64.

As mentioned earlier this may indicate that there are a lot of children in Plas Madoc which is confirmed by a higher than average birth rate. This may be related to a lack of effective family planning by residents.

The lower than average proportion of 45-64 year olds and 65+ year olds may be related to the poor health of residents indicating that they possible die at a younger age.

Education and Lifelong learning

Residents in Plas Madoc are more likely than the average to have poor numeracy and literacy skills, as well as being more likely to have no qualifications. This could be for a number of reasons including poor education facilities in the area, a negative attitude to the advantages of education and a high level of parents that are unable to assist their children with their school work. A low level of education is probably partly responsible for high level of residents in unskilled occupations.