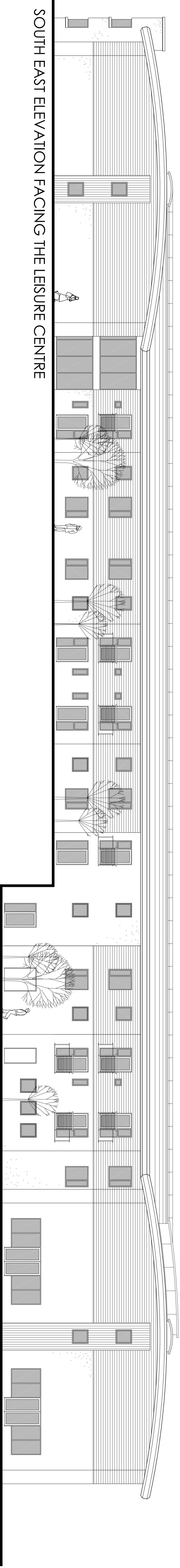
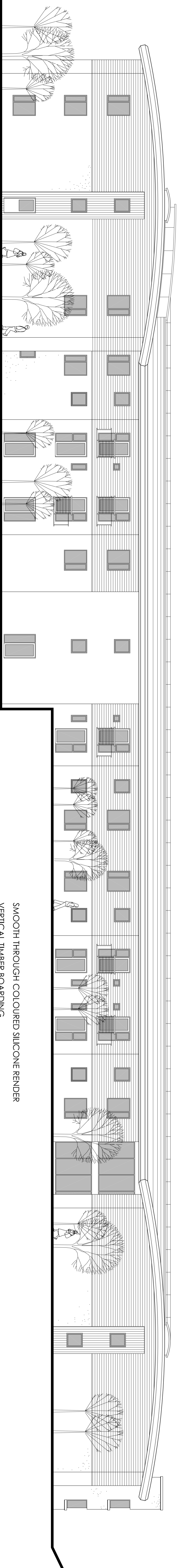


NOTES:
 ALL DIMENSIONS TO BE CHECKED AND CORRECTED BEFORE TO ANY
 30% SCALE OFF THE DRAWING.
 ANY ERRORS, OMISSIONS OR DISCREPANCIES TO BE REPORTED TO THE
 ATTENTION OF MUNNPO ASSOCIATES IMMEDIATELY.

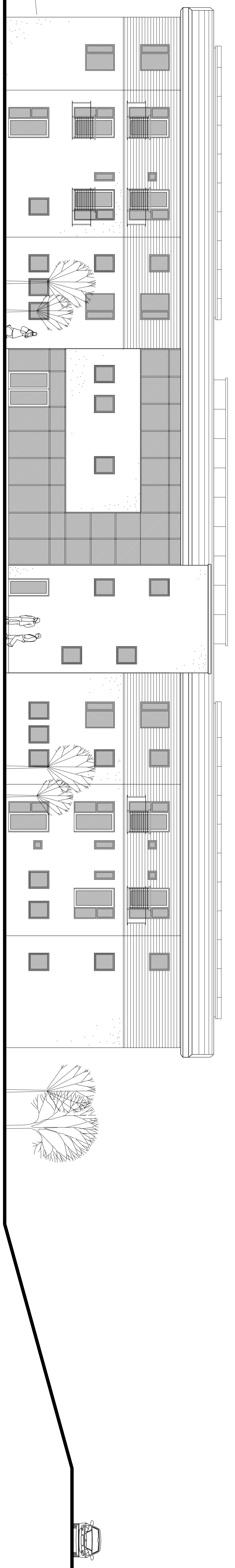


SOUTH EAST ELEVATION FACING THE LEISURE CENTRE



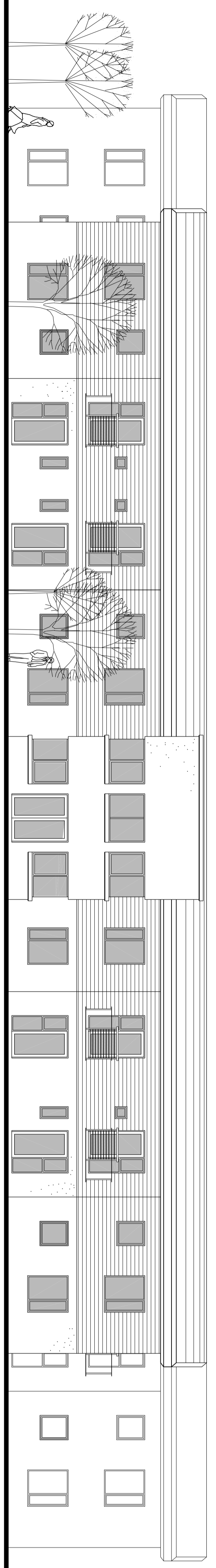
NORTH WEST ELEVATION FACING HAMPDEN WAY

SMOOTH THROUGH COLOURED SILICONE RENDER
 HORIZONTAL TIMBER BOARDING
 HARDWOOD DOUBLE GLAZED DOORS AND WINDOWS WITH JULIET BALCONYS



NORTH EAST ELEVATION - MAIN ENTRANCE

GLAZED CONSERVATORY ROOF AND DOMED ROOFLIGHTS
 GREEN ROOF PLANTED WITH SEDUM
 ALUMINIUM CURTAIN WALLING



SOUTH WEST ELEVATION FACING PERIS

REV	DATE	DESCRIPTION	BY
1	10/04/2008	Design development, All round	MM

PRELIMINARY



COMMERCIAL ARCHITECTS
 15 SOUTH BRIDGE STREET, SUITE 101
 WREKHAM, WYOMERSLEY, WYOMERSLEY, WYOMERSLEY, WYOMERSLEY
 WYOMERSLEY, WYOMERSLEY, WYOMERSLEY, WYOMERSLEY, WYOMERSLEY

Client:
 Chwyd Alyn Housing Association
 Project:
 Proposed 52 Unit Extra Care facility
 Llys Medoc
 Wrekham

Scale:
 1:100 @ A0
 Date:
 NOVEMBER 08

Elevations as Proposed

Project No.	Drawing No.	Revision
484	4.01	B

© THE CONTENTS OF THE DRAWING ARE THE PROPERTY OF MUNNPO ASSOCIATES. IT MUST NOT BE REPRODUCED OR TRANSMITTED IN ANY FORM OR BY ANY MEANS, ELECTRONIC OR MECHANICAL, WITHOUT THE WRITTEN PERMISSION OF MUNNPO ASSOCIATES.