

COMPANY REGISTRATION NUMBER 4759519

**PLAS MADOC COMMUNITIES FIRST  
COMPANY LIMITED BY GUARANTEE  
FINANCIAL STATEMENTS  
31 MARCH 2008**

Charity Number 1099375

**UHY HACKER YOUNG**

Chartered Accountants & Registered Auditors  
First Floor  
Pembroke House  
Ellice Way  
Wrexham Technology Park  
Wrexham  
LL13 7YT

**PLAS MADOC COMMUNITIES FIRST  
COMPANY LIMITED BY GUARANTEE**

**FINANCIAL STATEMENTS**

**YEAR ENDED 31 MARCH 2008**

<b>CONTENTS</b>	<b>PAGE</b>
<b>Members of the Board and professional advisers</b>	<b>1</b>
<b>Trustees Annual Report</b>	<b>3</b>
<b>Statement of responsibilities of the Trustees</b>	<b>10</b>
<b>Independent auditor's report</b>	<b>11</b>
<b>Statement of Financial Activities</b>	<b>13</b>
<b>Income and Expenditure Account</b>	<b>14</b>
<b>Balance sheet</b>	<b>15</b>
<b>Notes to the financial statements</b>	<b>16</b>

# PLAS MADOC COMMUNITIES FIRST COMPANY LIMITED BY GUARANTEE

## MEMBERS OF THE BOARD AND PROFESSIONAL ADVISERS

<b>Registered charity name</b>	Plas Madoc Communities First
<b>Charity number</b>	1099375
<b>Company registration number</b>	4759519
	Plas Madoc Opportunity Centre Hampden Way Plas Madoc Wrexham LL14 3US
<b>Registered office</b>	The Opportunity Centre Hampden Way Plas Madoc Wrexham LL14 3US
<b>Trustees</b>	Mr M R Leather Mr L J O'Donnell (Resigned 14 May 2008) Mr B Powell Dr T Downes (Appointed 14 May 2008) Mr P Blackwell Mrs B Singfield (Retired 26 April 2007) Mr A O Evans Mrs FJ Hughes (Appointed 14 May 2008) Mr S W Griffiths (Appointed 23 July 2008)
<b>Secretary</b>	Mrs S Lloyd
<b>Auditor</b>	UHY Hacker Young Chartered Accountants & Registered Auditors First Floor Pembroke House Ellice Way Wrexham Technology Park Wrexham LL13 7YT
<b>Bankers</b>	HSBC 17 - 19 Regent Street Wrexham LL11 1RY

**PLAS MADOC COMMUNITIES FIRST  
COMPANY LIMITED BY GUARANTEE**

**MEMBERS OF THE BOARD AND PROFESSIONAL ADVISERS** *(continued)*

**Solicitors**

Gwilym Hughes & Partners  
26 - 30 Grosvenor Road  
Wrexham  
LL11 1BU

# PLAS MADOC COMMUNITIES FIRST COMPANY LIMITED BY GUARANTEE

## TRUSTEES ANNUAL REPORT *(continued)*

### YEAR ENDED 31 MARCH 2008

#### Report of the Council of Management for the year ended 31 March 2008

The Council of Management presents its report and audited financial statements for the year ended 31 March 2008.

The trustees, who are also directors for the purposes of company law, have pleasure in presenting their report and the financial statements of the charity for the year ended 31 March 2008.

#### Council of Management – Directors and Trustees

Mr M Leather	Chair	
Mr L O'Donnell	Vice Chair	(Retired 14 May 2008)
Mr B Powell	Treasurer	
Mr P Blackwell		
Mr A Evans		
Mrs B Singfield		(Retired 26 April 2007)

Dr T Downes was appointed as a member of the committee on 14 May 2008

Mrs FJ Hughes was appointed as a member of the committee on 14 May 2008

Mr SW Griffiths was appointed as a member of the committee on 23 July 2008

Mr LJ O'Donnell retired as a member of the committee on 14 May 2008

#### Secretary

Mrs S Lloyd

#### Senior Management Team

Mrs M Beard	Co-ordinator
Mr A Bunning	Finance Manager

#### Structure, Governance and Management

##### Governing Document

The organisation is a charitable company limited by guarantee, incorporated on 9<sup>th</sup> May 2003 and registered as a charity on 11<sup>th</sup> September 2003. The company was established under a Memorandum of Association which established the objects and powers of the charitable company and is governed under its Articles of Association. In the event of the company being wound up members are required to contribute an amount not exceeding £1.

##### Recruitment and Appointment of Council of Management

The directors of the company are also charity trustees for the purposes of charity law and under the company's Articles are known as Members of the Council of Management of the company. Under the requirements of the Memorandum and Articles of Association the Members of the Council of Management are elected to serve until required to retire by rotation.

# **PLAS MADOC COMMUNITIES FIRST COMPANY LIMITED BY GUARANTEE**

## **TRUSTEES ANNUAL REPORT *(continued)***

### **YEAR ENDED 31 MARCH 2008**

Due to the nature of the Charity and the structure of the organisation's thematic group approach, all Trustees are selected and appointed with reference to their skills, ability and representation of the local community or other partnership organisation. The existing Council of Management consider their structure to be appropriate for the Charity's current and future plans, although all applications to join the Council of Management are carefully considered and measured against the Charity's principle objectives.

#### **Induction and Training**

All the Trustees have attended externally presented training seminars that have acquainted the Trustee with the obligations and duties of both a Trustee and Director.

New Trustee's will be expected to attend a series of short training sessions to familiarise themselves with the charity and the context within which it operates. These will be jointly led by the Chairs of the Council of Management and the Co-ordinator and cover:-

- The obligations of the Council of Management members
- The main documents which set out the operational framework for the charity including Memorandum and Articles, Wag's Communities First guidance, Accounting Procedures and Controls.
- The Strategy and Action Plan
- The Current Financial position of the company.

#### **Organisational Structure**

At present the Council of Management has six members from a variety of backgrounds but all either live within or have close relationships with the estate. The Council of Management meet on a bi-monthly basis where the reports of the Co-ordinator and all the other working officers are reviewed and discussed. The current actions plans are considered and amended if necessary. The Co-ordinator and Secretary, (along with other working officers - differs monthly) also attend the bi-monthly meetings but have no voting rights.

Each Council member is responsible for one of the Thematic Sub –Groups. These Groups consist of members of the community who may wish to invite external agency and organisations as Partners on the Sub Group. Each Sub- Group will have a chair nominated by the Sub-Group community members. Any actions identified by the Sub-Group will be passed to the appropriate Council of Management member, who will then present it at the next meeting for consideration by the Council of Management.

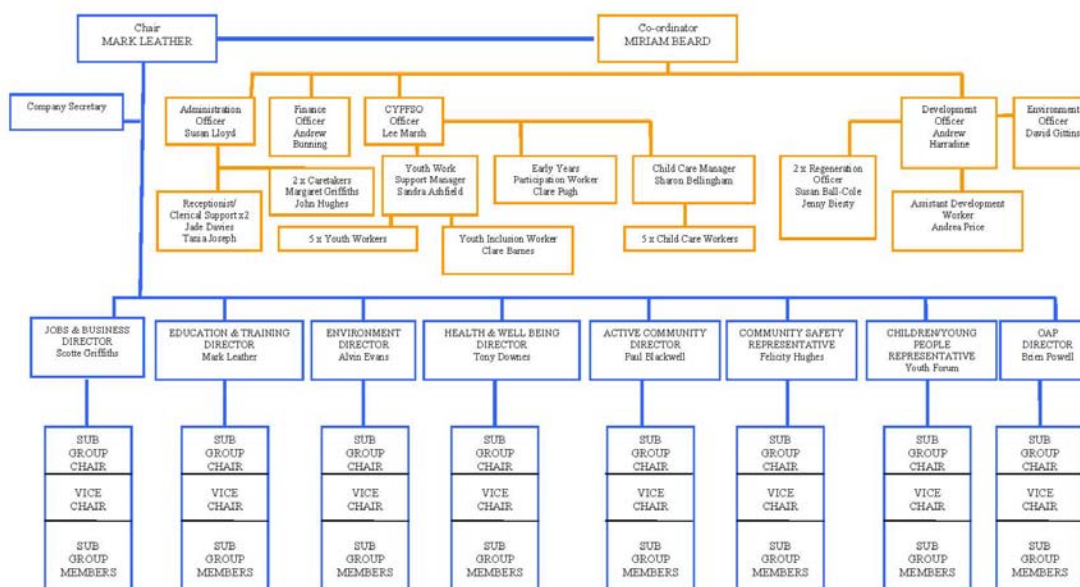
# PLAS MADOC COMMUNITIES FIRST COMPANY LIMITED BY GUARANTEE

## TRUSTEES ANNUAL REPORT *(continued)*

YEAR ENDED 31 MARCH 2008



### PLAS MADOC COMMUNITIES FIRST STRUCTURE



The sub groups are made up of local residents being the majority and also representatives from the local authority, voluntary and statutory sectors who offer their support to the group. Identified needs for improvements proposed by the group are forwarded to the Board of Directors to ensure identified needs have been recognised and are in accordance with the Strategy and Action Plan. Plas Madoc Communities First staff will continue to encourage involvement and participation of the local community as well as voluntary, business and statutory sectors.

A scheme of delegation is in place and day to day responsibility for the management of the Charity rest with the Co-ordinator, with Financial Control resting with the Finance Officer.

### Related Parties

The Communities First Programme actively encourages (WAG Guidelines) and depends on the Charity forming partnerships between all the people, groups and organisations that have an interest in Plas Madoc. The Charity has forged partnerships and links with a many third party organisations and continues to seek partnership with other organisations that could add value to the program in Plas Madoc.

A selection of Key Partners include

- ❖ Wrexham County Borough Council
- ❖ Association of Voluntary Organisations Wrexham (AVOW)
- ❖ Youth Justice Service
- ❖ WCVA
- ❖ DVCP
- ❖ Careers Wales
- ❖ Ymlaen
- ❖ Air Products Ltd.
- ❖ Community Safety Partnership
- ❖ North Wales Police and Fire Services.

# PLAS MADOC COMMUNITIES FIRST COMPANY LIMITED BY GUARANTEE

## TRUSTEES ANNUAL REPORT *(continued)*

### YEAR ENDED 31 MARCH 2008

#### **Risk Management**

The Council of Management are conducting a review of the major risks to which the charity is exposed and these will be published when completed. All events undertaken by the Charity are subjected to Risk Assessment and a register of these is maintained. Procedures are in place to ensure compliance with health and safety of staff, volunteers, clients and visitors to the centre. These procedures are periodically reviewed to ensure that they continue to meet the needs of the charity.

#### **Objectives**

The company's objects is to promote the Welsh Assembly Government Communities First programme designed to enable communities to pursue sustainable development and tackle social disadvantage themselves, through local partnerships, focusing on the Estate of Plas Madoc. Full details of the Charity's objectives are stated in the Strategy and Action Plan 2003 – 2008. The Charity is updating the Strategy and Action Plan in line with the guidelines issued by WAG following the review of the Communities First programme and funding proposals from 2009 onwards.

#### **Activities**

The main activities of the Charity continue to be working towards meeting the 'vision' for the community:- *“People working together, improving today and shaping tomorrow to create a safe, attractive and sustainable community in Plas Madoc where people want to live, work and visit”*

The CF Programme in Plas Madoc continues its strong growth following its difficult beginnings. CF continues to recruit/engage many members of the community as staff, volunteers or sub-group members. The introduction of childcare services on the estate through the Little Sunflowers umbrella has resulted in a number of residents becoming part-time staff. Services / activities on the estate have been accessed by several hundred people. PMCF has delivered affordable childcare, environmental improvements, a Drop-In service as well as continuing The Venue Youth Club and many, many training courses. Weekly publicity in the local papers continues to portraying a positive image of the estate and is raising the confidence of the community.

# PLAS MADOC COMMUNITIES FIRST COMPANY LIMITED BY GUARANTEE

## TRUSTEES ANNUAL REPORT *(continued)*

### YEAR ENDED 31 MARCH 2008

#### **Achievements and Performance**

The key achievements for the year were:-

- ❖ Expansion of Childcare through the Little Sunflowers with rising 4's and After School club
- ❖ Number of local people employed increases to 21 as a result of obtaining additional funding from various sources.
- ❖ Significant increase in the number of sub group members, emphasising that the programme is receiving widespread support throughout the local community and key partners
- ❖ Expansion of Environmental Audits and introduction of Junior warden Scheme.
- ❖ In excess of £260,000 additional funding/support obtained during the year in addition to the WAG core funding.

The Little Sunflowers playgroup/childcare programme was significantly expanded with the provision of Rising4's and After School Club, together with full School Holiday day care provision. A number of staff obtained NVQ qualifications in the year, and 2 staff have the highest qualification level in Wrexham

To consolidate on progress made with the monthly environmental audits and Environmental Action Days funding obtained for 3 further Action Days. A Junior Environmental Warden Scheme was started with 6 young people working in partnership with the Local Authority and North Wales Police. A Multi-agency Graffiti day resulted in 85% of historical graffiti removed from the estate.

The last year has seen a continuation of the significant level of community involvement in the programme. The development of the Little Sunflowers childcare programme has provided a wide range of childcare options for local residents, thus enabling some to return to the workplace. The scheme has resulted in a number of estate residents receiving training. The Venue Youth Club has continued to flourish and the Community Safety Group has continued to grow with 90 members and a year on year survey result of a 15% reduction in crime on the estate.

# PLAS MADOC COMMUNITIES FIRST COMPANY LIMITED BY GUARANTEE

## TRUSTEES ANNUAL REPORT *(continued)*

### YEAR ENDED 31 MARCH 2008

#### Review by Sub Group

**Jobs & Businesses** A total of 21 people from the estate are employed, 9 through the Flying Start programme. 2 start up business were supported during the year.

**Education & Training** 13 community members have achieved NVQ qualifications leading to employment., and one local part-time employee is on final year of degree course. Courses continue to run, with new courses in the year for Counseling and Sign Language.

**Environment** – Monthly Environmental Audits continue with involvement from residents, Community Councilors, Police and Local Authority, over 90 remedial tasks have been completed as a result. Funding for 3 further Environment Action Days secured. Junior warden Scheme commenced. Multi-Agency graffiti removed 85% of graffiti.

**Health & Wellbeing** – Raised awareness of health issues through events such as Breast Screening with Breast Test Wales, accessed by over 70 women. Blood Pressure and Smoking cessation events undertaken. Nutrition awareness sessions take place weekly for both adults and young people. Installation of Trim Trail and increased activity with LHB over provision of Health Centre. Significant links established with local GP

**Active Communities** – The sub group membership is over 700 with significant proportion being Tenants. The tenants and residents Association has been reinstated. The website receives over 200 hits per month and the weekly press coverage continues.

**Crime & Community Safety** – Plas Madoc community Safety Group, which is now in its 4th year comprises 90 members and meets monthly. There has been a 15% reduction in reported crime on the estate. 12 new street lights and 5 upgraded units installed on the estate. The 3<sup>rd</sup> annual Safer Living Better Living consultation is underway.

**OAP** – Significant involvement with the proposed £8 million Extra Care Facility that will provide 50 housing units for older people. Ongoing social programme of trips and bingo sessions. A dance group is under development.

**Children & Young People** – The Venue Youth Club has been operational for 3 years offering activities and support for over 250 young members. The centre employs 8 members of staff from the estate. The Outdoor open Access play is recognised by Play Wales as a model of good practice.

# **PLAS MADOC COMMUNITIES FIRST COMPANY LIMITED BY GUARANTEE**

## **TRUSTEES ANNUAL REPORT *(continued)***

### **YEAR ENDED 31 MARCH 2008**

#### **Financial Review**

The Charity as a Communities First Programme organisation is very specific in its objectives and limited in its operating sphere. (Plas Madoc Estate only). Accordingly the Charity has concentrated on activities related to its principle source of funding. The Funding for all Communities First Partnerships in its present form expires 31/03/2009. The Welsh Assembly have announced a new funding programme for core activities for the period 2009-2012, together with additional funding streams. The Charity has submitted funding applications for the period 2009-2012 and has received notification from WAG that funding will continue for 2009-2012 for the majority of the Charity's current staff and projects.

#### **Principal Funding Sources**

The Charity's principle source of income during 2007/08 was from the National Assembly for Wales Communities First programme under section 126 of the Housing Grants, Construction and Regeneration Act 1996. A number of other grants were received during the year notably The Big Lottery Fund, WREN, Arts Council for Wales, The Youth Charity, Heritage Lottery Fund, Awards for All and Wrexham County Borough Council (Little Sunflowers)

#### **Investment Policy**

The Charity endeavours to match funding to expenditure (subject to timing differences) so no significant funds are retained as reserves. Unspent monies from its principal funder are returned in the following year. The Charity currently operates a Trust Banking Account with HSBC which gives the advantages of no charges but returns minimal interest on credit funds. The Charity also operates a Deposit Account with HSBC which returns Tax free Interest.

#### **Reserves Policy**

As the Charity currently matches its expenditure to available funding, significant reserves are not retained by the Charity and the Trustees have agreed this is acceptable during the development stage of the Charity, when funding from its principle source is confirmed at least 12 months in advance. The Trustees are aware of the need for future years to generate significant operating revenue to replace grant funding. Continuing the policy from 2005/06 the Charity will seek alternative funder's for certain projects and progress applications for revenue raising projects e.g. Health Centre, Community Cafe

#### **Plans for Future Periods**

The Charity plans continuing the activities outlined above in the forthcoming years. The Actions plans by sub group contained in the Strategy and Action Plans 2003 – 2008 will form the basis of the Charity's work and direction over the next year. Effort will also focus on developing revenue generating projects.

#### **Auditors**

UHY Hacker Young were re-appointed as the charities auditors during the year and have expressed their willingness to continue in that capacity. This report has been prepared in accordance with the Statement of Recommended Practice Accounting and Reporting by Charities (issued in March 2005) and in accordance with the special provisions of Part VII of the Companies Act 1985 relating to small entities.

**Mr B Powell**  
**Director & Trustee**

# **PLAS MADOC COMMUNITIES FIRST COMPANY LIMITED BY GUARANTEE**

## **STATEMENT OF RESPONSIBILITIES OF THE TRUSTEES**

**YEAR ENDED 31 MARCH 2008**

### **Responsibilities of the Council of Management**

Company law requires the Council of Management to prepare financial statements for each financial year which give a true and fair view of the state of the affairs of the charitable company as at the balance sheet date and of its incoming resources and application of resources, including income and expenditure, for the financial year. In preparing those financial statements, the Council of Management should follow best practice and:

- select suitable accounting policies and then apply them consistently;
- make judgements and estimates that are reasonable and prudent; and
- prepare the financial statements on the going concern basis unless it is inappropriate to assume that the company will continue on that basis.

The Council of Management is responsible for maintaining proper accounting records which disclose with reasonable accuracy at any time the financial position of the charitable company and to enable them to ensure that the financial statements comply with the Companies Act 1985. The Council of Management is also responsible for safeguarding the assets of the charitable company and hence for taking reasonable steps for the prevention and detection of fraud and other irregularities. Members of the Council of Management, who are directors for the purpose of company law and trustees for the purpose of charity law, who served during the year and up to the date of this report are set out on page 1. In accordance with company law, as the company's directors, we certify that:

- so far as we are aware, there is no relevant audit information of which the company's auditors are unaware; and
- as the directors of the company we have taken all the steps that we ought to have taken in order to make ourselves aware of any relevant audit information and to establish that the charity's auditors are aware of that information.

# **PLAS MADOC COMMUNITIES FIRST COMPANY LIMITED BY GUARANTEE**

## **INDEPENDENT AUDITOR'S REPORT TO THE MEMBERS OF PLAS MADOC COMMUNITIES FIRST**

### **YEAR ENDED 31 MARCH 2008**

We have audited the financial statements of Plas Madoc Communities First for the year ended 31 March 2008 on page 13 to 26 which have been prepared under the historical cost convention and the accounting policies set out on pages 16 to 17.

This report is made solely to the company's members, as a body, in accordance with Section 235 of the Companies Act 1985. Our audit work has been undertaken so that we might state to the company's members those matters we are required to state to them in an auditor's report and for no other purpose. To the fullest extent permitted by law, we do not accept or assume responsibility to anyone other than the company and the company's members as a body, for our audit work, for this report, or for the opinions we have formed.

#### **RESPECTIVE RESPONSIBILITIES OF THE TRUSTEES AND AUDITORS**

The responsibilities of the trustees (who also act as directors of Plas Madoc Communities First for the purposes of company law) for preparing the Trustees Annual Report and the financial statements in accordance with applicable law and United Kingdom Accounting Standards (United Kingdom Generally Accepted Accounting Practice) are set out in the Statement of Responsibilities of the Trustees on page 10

Our responsibility is to audit the financial statements in accordance with relevant legal and regulatory requirements and International Standards on Auditing (UK and Ireland).

We report to you our opinion as to whether the financial statements give a true and fair view and are properly prepared in accordance with the Companies Act 1985, and whether the information given in the Trustees Annual Report is consistent with the financial statements.

In addition we report to you if, in our opinion, the charitable company has not kept proper accounting records, if we have not received all the information and explanations we require for our audit, or if information specified by law regarding remuneration of the trustees and other transactions is not disclosed.

We read the Trustees Annual Report and consider the implications for our report if we become aware of any apparent misstatements within it.

#### **BASIS OF AUDIT OPINION**

We conducted our audit in accordance with International Standards on Auditing (UK and Ireland) issued by the Auditing Practices Board. An audit includes examination, on a test basis, of evidence relevant to the amounts and disclosures in the financial statements. It also includes an assessment of the significant estimates and judgements made by the trustees in the preparation of the financial statements, and of whether the accounting policies are appropriate to the charitable company's circumstances, consistently applied and adequately disclosed.

We planned and performed our audit so as to obtain all the information and explanations which we considered necessary in order to provide us with sufficient evidence to give reasonable assurance that the financial statements are free from material misstatement, whether caused by fraud or other irregularity or error. In forming our opinion we also evaluated the overall adequacy of the presentation of information in the financial statements.

**PLAS MADOC COMMUNITIES FIRST  
COMPANY LIMITED BY GUARANTEE**

**INDEPENDENT AUDITOR'S REPORT TO THE MEMBERS OF PLAS MADOC  
COMMUNITIES FIRST *(continued)***

**YEAR ENDED 31 MARCH 2008**

**OPINION**

In our opinion:

- the financial statements give a true and fair view, in accordance with United Kingdom Generally Accepted Accounting Practice, of the state of the charitable company's affairs as at 31 March 2008 and of its incoming resources and application of resources, including its income and expenditure, for the year then ended;
- the financial statements have been properly prepared in accordance with the Companies Act 1985; and
- the information given in the Trustees Annual Report is consistent with the financial statements.

First Floor  
Pembroke House  
Ellice Way  
Wrexham Technology Park  
Wrexham  
LL13 7YT

UHY HACKER YOUNG  
Chartered Accountants  
& Registered Auditors

.....

**PLAS MADOC COMMUNITIES FIRST  
COMPANY LIMITED BY GUARANTEE**

**STATEMENT OF FINANCIAL ACTIVITIES**

**YEAR ENDED 31 MARCH 2008**

	Note	Unrestricted Funds £	Restricted Funds £	Total Funds 2008 £	Total Funds 2007 £
<b>INCOMING RESOURCES</b>					
Incoming resources from generating funds:					
Activities for Generating Funds	2	11,954	–	11,954	522
Voluntary income	3	–	1,825	1,825	–
Investment income	4	3,102	2,653	5,755	317
Incoming resources from charitable activities	5	520,728	199,609	720,337	730,457
Other incoming resources		–	–	–	11,984
<b>TOTAL INCOMING RESOURCES</b>		<b>535,784</b>	<b>204,087</b>	<b>739,871</b>	<b>743,280</b>
<b>RESOURCES EXPENDED</b>					
Costs of generating funds:					
Charitable activities	6/7	(543,980)	(146,159)	(690,139)	(600,854)
Governance costs	8	(3,165)	–	(3,165)	(23,170)
Other Resources Expended		–	–	–	(12,086)
<b>TOTAL RESOURCES EXPENDED</b>		<b>(547,145)</b>	<b>(146,159)</b>	<b>(693,304)</b>	<b>(636,110)</b>
<b>NET INCOMING RESOURCES BEFORE TRANSFERS</b>					
Transfer between funds	9 10	(11,361) (10,409)	57,928 10,409	46,567 –	107,170 –
<b>NET INCOMING RESOURCES BEFORE OTHER RECOGNISED GAINS AND LOSSES</b>					
OTHER RECOGNISED GAINS AND LOSSES		(21,770)	68,337	46,567	107,170
Disposal of fixed assets		–	–	–	(793)
<b>NET MOVEMENT IN FUNDS RECONCILIATION OF FUNDS</b>		<b>(21,770)</b>	<b>68,337</b>	<b>46,567</b>	<b>106,377</b>
Total funds brought forward		207,302	98,623	305,925	199,547
<b>TOTAL FUNDS CARRIED FORWARD</b>		<b>185,532</b>	<b>166,960</b>	<b>352,492</b>	<b>305,924</b>

All of the above amounts relate to continuing activities.

The notes on pages 16 to 26 form part of these financial statements.

**PLAS MADOC COMMUNITIES FIRST  
COMPANY LIMITED BY GUARANTEE**

**INCOME AND EXPENDITURE ACCOUNT**

**YEAR ENDED 31 MARCH 2008**

	Note	2008 £	2007 £
<b>INCOME</b>		<b>734,116</b>	742,963
<b>TOTAL INCOME</b>		<u><b>734,116</b></u>	<u>742,963</u>
<b>TOTAL EXPENDITURE</b>		<u><b>(693,304)</b></u>	<u>(636,110)</u>
<b>OPERATING SURPLUS</b>	<b>9</b>	<b>40,812</b>	106,853
<b>NON-OPERATING EXCEPTIONAL ITEMS</b>			
Disposal of fixed assets		–	(793)
		<u><b>40,812</b></u>	<u>106,060</u>
<b>OTHER INCOME</b>			
Interest receivable and similar income	<b>4</b>	<b>5,755</b>	317
<b>RETAINED SURPLUS FOR THE FINANCIAL YEAR</b>		<u><u><b>46,567</b></u></u>	<u><u>106,377</u></u>

The Income and Expenditure Account includes all gains and losses in the year and therefore a statement of total recognised gains and losses has not been prepared.

All of the above amounts relate to continuing activities.

The notes on pages 16 to 26 form part of these financial statements.

**PLAS MADOC COMMUNITIES FIRST  
COMPANY LIMITED BY GUARANTEE**

**BALANCE SHEET**

**31 MARCH 2008**

	Note	2008 £	£	2007 £
<b>FIXED ASSETS</b>				
Tangible assets	12		177,615	144,000
<b>CURRENT ASSETS</b>				
Debtors	13	15,878		23,184
Cash at bank and in hand		<u>293,678</u>		<u>201,483</u>
		309,556		224,667
<b>CREDITORS:</b>				
Amounts falling due within one year	14	<u>(134,678)</u>		<u>(62,743)</u>
<b>NET CURRENT ASSETS</b>			<b>174,878</b>	161,924
<b>TOTAL ASSETS LESS CURRENT LIABILITIES</b>			<u><b>352,493</b></u>	<u>305,924</u>
<b>NET ASSETS</b>			<u><b>352,493</b></u>	<u>305,924</u>
<b>FUNDS</b>				
Restricted income funds	15		<b>166,958</b>	98,622
Unrestricted income funds	16		<b>185,535</b>	207,302
<b>TOTAL FUNDS</b>			<u><b>352,493</b></u>	<u>305,924</u>

These financial statements were approved and authorised for issue by the members of the committee and authorised for issue on the ..... and are signed on their behalf by:

.....  
MR B POWELL  
Trustee

The notes on pages 16 to 26 form part of these financial statements.

# PLAS MADOC COMMUNITIES FIRST COMPANY LIMITED BY GUARANTEE

## NOTES TO THE FINANCIAL STATEMENTS

### YEAR ENDED 31 MARCH 2008

#### 1. ACCOUNTING POLICIES

##### **Basis of accounting**

The financial statements have been prepared under the historical cost convention and in accordance with applicable United Kingdom accounting standards, the Statement of Recommended Practice "Accounting and Reporting by Charities" issued in March 2005 (SORP 2005) and the Companies Act 1985.

##### **Going concern**

As the majority of the company's income is derived from bids to deliver projects on behalf of the Welsh Assembly Government, the adoption of the going concern basis of preparing the financial statements is dependent on continued funding from the Welsh Assembly Government.

As a result of discussions with representatives of the Welsh Assembly Government the trustees expect sufficient funding to be granted for the year ending 31st March 2010 to ensure that the going concern basis of preparation of the accounts remains appropriate.

##### **Cash flow statement**

The trustees have taken advantage of the exemption in Financial Reporting Standard No 1 (revised) from including a cash flow statement in the financial statements on the grounds that the charity is small.

##### **Donations**

Donations income is recognised in the accounts when it is received in the bank account of the charity.

##### **Incoming resources**

Grant funding is in the form of grants which are accounted for on a receivable basis and credited to restricted fund income. Any unspent balances are carried forward on the appropriate fund. Voluntary income is received by way of donations and gifts and is included in full in the Statement of Financial Activities when receivable. The value of services provided by volunteers has not been provided.

##### **Resources expended**

Expenditure is recognised on an accrual basis as a liability incurred. Expenditure includes any VAT which cannot be recovered, and is reported as part of the expenditure to which it relates:

- Costs of generating funds comprise the costs associated with attracting voluntary income and the costs of trading for fundraising purposes.
- Charitable expenditure comprises those costs incurred by the charity in the delivery of its activities and services for its beneficiaries. It includes both costs that can be allocated directly to such activities and those costs of an indirect nature to support them.
- Governance costs include those costs associated with meeting the constitutional and statutory requirements of the charity and include the audit fees and costs linked to the strategic management of the charity.

# PLAS MADOC COMMUNITIES FIRST COMPANY LIMITED BY GUARANTEE

## NOTES TO THE FINANCIAL STATEMENTS

YEAR ENDED 31 MARCH 2008

### 1. ACCOUNTING POLICIES (continued)

All costs are allocated between the expenditure categories on the SoFA on a basis designed to reflect the use of the resource. Costs relating to a particular activity and others apportioned on an appropriate basis as set out in Note 7.

#### Fixed assets

All fixed assets are initially recorded at cost.

#### Depreciation

Depreciation is calculated so as to write off the cost of an asset, less its estimated residual value, over the useful economic life of that asset as follows:

Equipment	- 25% reducing balance
Fixtures & Fittings	- 15% reducing balance
Motor Vehicles	- 25% reducing balance

### 2. ACTIVITIES FOR GENERATING FUNDS

	Unrestricted Funds	Total Funds 2008	Total Funds 2007
	£	£	£
Trading Income	<u>11,954</u>	<u>11,954</u>	<u>522</u>

### 3. VOLUNTARY INCOME

	Restricted Funds	Total Funds 2008	Total Funds 2007
	£	£	£
<b>Donations</b>			
Donations for The Gunjar Project	980	980	-
Donations for the Football Club	100	100	-
Donations for Little Sunflowers	85	85	-
Donations for Rising 4's	660	660	-
	<u>1,825</u>	<u>1,825</u>	<u>-</u>

### 4. INVESTMENT INCOME

	Unrestricted Funds	Restricted Funds	Total Funds 2008	Total Funds 2007
	£	£	£	£
Bank interest receivable	<u>3,102</u>	<u>2,653</u>	<u>5,755</u>	<u>317</u>

**PLAS MADOC COMMUNITIES FIRST  
COMPANY LIMITED BY GUARANTEE**

**NOTES TO THE FINANCIAL STATEMENTS**

**YEAR ENDED 31 MARCH 2008**

**5. INCOMING RESOURCES FROM CHARITABLE ACTIVITIES**

	<b>Unrestricted Funds</b>	<b>Restricted Funds</b>	<b>Total Funds 2008</b>	<b>Total Funds 2007</b>
	<b>£</b>	<b>£</b>	<b>£</b>	<b>£</b>
Grants from Welsh Assembly	<b>520,728</b>	–	<b>520,728</b>	497,907
Grants from WCVA	–	<b>23,322</b>	<b>23,322</b>	18,806
Grants from The Big Lottery Fund	–	<b>44,141</b>	<b>44,141</b>	77,180
Grants from WCBC	–	<b>61,443</b>	<b>61,443</b>	54,641
Grants from The Dee Valley Community Partnership	–	<b>1,300</b>	<b>1,300</b>	–
Grants from the Kathleen Davies Trust	–	<b>40,400</b>	<b>40,400</b>	36,400
Grants from The Heritage Lottery Fund	–	<b>11,600</b>	<b>11,600</b>	–
Grants from The Sports Council for Wales	–	<b>1,820</b>	<b>1,820</b>	12,004
Grants from The Waste Recycling Environmental	–	–	–	20,000
Grants from other sources	–	<b>15,583</b>	<b>15,583</b>	13,519
	<b>520,728</b>	<b>199,609</b>	<b>720,337</b>	<b>730,457</b>

**6. COSTS OF CHARITABLE ACTIVITIES BY FUND TYPE**

	<b>Unrestricted Funds</b>	<b>Restricted Funds</b>	<b>Total Funds 2008</b>	<b>Total Funds 2007</b>
	<b>£</b>	<b>£</b>	<b>£</b>	<b>£</b>
Communities First Running Costs	<b>523,830</b>	<b>10,323</b>	<b>534,153</b>	484,883
People and Places	–	<b>28,660</b>	<b>28,660</b>	18,971
Cymorth	<b>20,150</b>	–	<b>20,150</b>	28,527
WCVA Activities	–	<b>4,949</b>	<b>4,949</b>	–
Youth Charity Regeneration Officer	–	<b>31,393</b>	<b>31,393</b>	15,327
Big Lottery Garden Fund	–	<b>1,290</b>	<b>1,290</b>	53,146
Little Sunflowers	–	<b>31,932</b>	<b>31,932</b>	–
Rising 4's (After School Club)	–	<b>8,635</b>	<b>8,635</b>	–
Other Project Expenses	–	<b>17,331</b>	<b>17,331</b>	–
Playscheme	–	<b>11,646</b>	<b>11,646</b>	–
	<b>543,980</b>	<b>146,159</b>	<b>690,139</b>	<b>600,854</b>

**PLAS MADOC COMMUNITIES FIRST  
COMPANY LIMITED BY GUARANTEE**

**NOTES TO THE FINANCIAL STATEMENTS**

**YEAR ENDED 31 MARCH 2008**

**7. COSTS OF CHARITABLE ACTIVITIES BY ACTIVITY TYPE**

	<b>Plas Madoc Communities First Running Costs</b>	<b>Grant funding activities</b>	<b>Total Funds 2008</b>	<b>Total Funds 2007</b>
	<b>£</b>	<b>£</b>	<b>£</b>	<b>£</b>
Communities First Running Costs	534,153	–	534,153	484,883
People and Places	28,660	–	28,660	18,971
Cymorth	20,150	–	20,150	28,527
WCVA Activities	-	4,949	4,949	–
Youth Charity Regeneration Officer	31,393	–	31,393	15,327
Big Lottery Garden Fund	-	1,290	1,290	53,146
Little Sunflowers	31,051	881	31,932	–
Rising 4's (After School Club)	8,447	188	8,635	–
Other Project Expenses	-	17,331	17,331	–
Playscheme	4,608	7,038	11,646	–
	<u>658,462</u>	<u>31,677</u>	<u>690,139</u>	<u>600,854</u>

**8. GOVERNANCE COSTS**

	<b>Unrestricted Funds</b>	<b>Total Funds 2008</b>	<b>Total Funds 2007</b>
	<b>£</b>	<b>£</b>	<b>£</b>
Bad Debt Write Off	221	221	–
Audit fees	2,944	2,944	4,218
Legal fees	–	–	633
Staff Training & Seminars	–	–	18,319
	<u>3,165</u>	<u>3,165</u>	<u>23,170</u>

**9. NET INCOMING RESOURCES FOR THE YEAR**

This is stated after charging:

	<b>2008</b>	<b>2007</b>
	<b>£</b>	<b>£</b>
Depreciation	39,160	30,702
Auditors' remuneration: - audit of the financial statements	<u>2,944</u>	<u>4,218</u>

**10. FUND TRANSFERS**

The £10,409 transfer between funds represents transfers of £586 to FAT club, £761 to the Sensory Garden, £196 to 48/49 Peris, £5,995 to the Gunjar Project, £5,351 to the Rising 4's and £172 to the Arts Council from the general unrestricted fund to cover the deficit in the year. This also included a transfer from restricted funds of (£2,653) representing investment income generated during the year.

**PLAS MADOC COMMUNITIES FIRST  
COMPANY LIMITED BY GUARANTEE**

**NOTES TO THE FINANCIAL STATEMENTS**

**YEAR ENDED 31 MARCH 2008**

**11. STAFF COSTS AND EMOLUMENTS**

**Total staff costs were as follows:**

	<b>2008</b>	2007
	£	£
Wages and salaries	<b>421,044</b>	353,250
Social security costs	<b>34,870</b>	32,222
	<u><b>455,914</b></u>	<u>385,472</u>

**Particulars of employees:**

The average number of employees during the year, calculated on the basis of full-time equivalents, was as follows:

	<b>2008</b>	2007
	No	No
Plas Madoc Communities First	<b>22</b>	21
Big Lottery Fund	<b>1</b>	1
Cymorth	<b>1</b>	1
Youth Charity	<b>2</b>	2
	<u><b>26</b></u>	<u>25</u>

No employee received emoluments of more than £60,000 during the year (2007 - Nil).

**PLAS MADOC COMMUNITIES FIRST  
COMPANY LIMITED BY GUARANTEE**

**NOTES TO THE FINANCIAL STATEMENTS**

**YEAR ENDED 31 MARCH 2008**

**12. TANGIBLE FIXED ASSETS**

	<b>Office Equipment £</b>	<b>Fixtures &amp; Fittings £</b>	<b>Motor Vehicles £</b>	<b>Total £</b>
<b>COST</b>				
At 1 April 2007	68,424	167,840	16,249	252,513
Additions	21,648	51,126	–	72,774
<b>At 31 March 2008</b>	<u>90,072</u>	<u>218,966</u>	<u>16,249</u>	<u>325,287</u>
<b>DEPRECIATION</b>				
At 1 April 2007	37,326	68,625	2,562	108,513
Charge for the year	13,186	22,551	3,422	39,159
<b>At 31 March 2008</b>	<u>50,512</u>	<u>91,176</u>	<u>5,984</u>	<u>147,672</u>
<b>NET BOOK VALUE</b>				
<b>At 31 March 2008</b>	<u>39,560</u>	<u>127,790</u>	<u>10,265</u>	<u>177,615</u>
At 31 March 2007	<u>31,098</u>	<u>99,215</u>	<u>13,687</u>	<u>144,000</u>

**PLAS MADOC COMMUNITIES FIRST  
COMPANY LIMITED BY GUARANTEE**

**NOTES TO THE FINANCIAL STATEMENTS**

**YEAR ENDED 31 MARCH 2008**

**13. DEBTORS**

	<b>2008</b>	2007
	£	£
Trade debtors	<b>2,748</b>	3,032
Other debtors	<b>3,891</b>	16,765
Prepayments	<b>9,239</b>	3,387
	<u><b>15,878</b></u>	<u>23,184</u>

**14. CREDITORS: Amounts falling due within one year**

	<b>2008</b>	2007
	£	£
Trade creditors	<b>43,543</b>	19,982
Taxation and social security	<b>10,837</b>	10,362
Wages control account	<b>408</b>	1,546
Other creditors	<b>42,159</b>	–
Accruals	<b>37,731</b>	30,853
	<u><b>134,678</b></u>	<u>62,743</u>

**15. RESTRICTED INCOME FUNDS**

	<b>Balance at 1 Apr 2007</b>	<b>Incoming resources</b>	<b>Outgoing resources</b>	<b>Transfers</b>	<b>Balance at 31 Mar 2008</b>
	£	£	£	£	£
People and Places	<b>7,301</b>	<b>43,718</b>	<b>(29,995)</b>	–	<b>21,024</b>
FAT Club Plas Madoc	<b>1,574</b>	–	<b>(2,160)</b>	<b>586</b>	–
Rockets	<b>547</b>	–	–	–	<b>547</b>
Youth Charity Media Project	<b>4,652</b>	–	<b>(1,387)</b>	–	<b>3,265</b>
Youth Charity Angling Project	<b>1,757</b>	–	–	–	<b>1,757</b>
Youth Charity Regeneration Officer	<b>23,264</b>	<b>36,400</b>	<b>(32,146)</b>	–	<b>27,518</b>
Young Mums Group	<b>2,001</b>	–	–	–	<b>2,001</b>
Wildlife Group	–	<b>4,960</b>	<b>(840)</b>	–	<b>4,120</b>
Little Sunflowers Parent Support Group	<b>2,134</b>	<b>42,268</b>	<b>(33,520)</b>	–	<b>10,882</b>
Big Lottery Garden Fund	<b>977</b>	<b>1,480</b>	<b>(206)</b>	–	<b>2,251</b>
	<b>536</b>	<b>423</b>	<b>(1,720)</b>	<b>761</b>	–
Balance carried forward	<u><b>44,743</b></u>	<u><b>129,249</b></u>	<u><b>(101,974)</b></u>	<u><b>1,347</b></u>	<u><b>73,365</b></u>

**PLAS MADOC COMMUNITIES FIRST  
COMPANY LIMITED BY GUARANTEE**

**NOTES TO THE FINANCIAL STATEMENTS**

**YEAR ENDED 31 MARCH 2008**

**15. RESTRICTED INCOME FUNDS** *(continued)*

	Balance at 1 Apr 2007 £	Incoming resources £	Outgoing resources £	Transfers £	Balance at 31 Mar 2008 £
Balance brought forward	44,743	129,249	(101,974)	1,347	73,365
Cymorth	3,527	6,767	(54)	–	10,240
WCVA Rangers	4,252	–	(624)	–	3,628
Plas Madoc					
Mixers	1,970	–	(574)	–	1,396
Trim Trail	12,004	–	(2,485)	–	9,519
Toy Library	3,827	–	(1,217)	–	2,610
Netball	750	–	–	–	750
Food Co-op	1,095	–	–	–	1,095
Get Out & Play	2,975	10,985	(11,644)	–	2,316
VEG	2,357	–	(1,580)	–	777
Football	553	1,220	(1,473)	–	300
48/49 Peris	–	–	(196)	196	–
WREN	20,000	317	(2,413)	–	17,904
Farepak	570	–	–	–	570
Just 4 U	–	1,662	(474)	–	1,188
Coracle Project	–	11,600	(413)	–	11,187
Jujitsu	–	5,000	–	–	5,000
Gunjar Project	–	5,980	(11,975)	5,995	–
Rising 4's	–	3,284	(8,635)	5,351	–
Integrated					
Children's Centre	–	5,003	(258)	–	4,745
50 Plus Group	–	1,824	–	–	1,824
Dance Group	–	3,330	–	–	3,330
Cricket Club	–	5,550	–	–	5,550
Waggie Tails	–	1,288	–	–	1,288
Plas Madoc					
Youth Safety					
Group	–	1,695	–	–	1,695
Young					
Olympians	–	1,793	–	–	1,793
Pride In Our					
Street	–	3,000	–	–	3,000
Community					
Learning	–	1,888	–	–	1,888
Arts Council	–	–	(172)	172	–
Bank Interest	–	2,653	–	(2,653)	–
	<u>98,623</u>	<u>204,088</u>	<u>(146,161)</u>	<u>10,408</u>	<u>166,958</u>

# PLAS MADOC COMMUNITIES FIRST COMPANY LIMITED BY GUARANTEE

## NOTES TO THE FINANCIAL STATEMENTS

### YEAR ENDED 31 MARCH 2008

#### 15. RESTRICTED INCOME FUNDS *(continued)*

##### Gunjar Project

Funded by WCVA and Kathleen Davies Trust; this project saw a group of eight 15-18 year olds take a trip to Gambia where they visited local villages, took part in tribal dances and taught local school children new games.

##### The Sensory Garden

This project was funded by the Big Lottery Fund and helped develop a garden by the Opportunity Centre called The 'Garden of Senses'. This project has led to many side projects designed to help the environment.

##### Youth Charity Regeneration Officer

Funded by the Kathleen Davies Trust this funds the salary and expenses of a Regeneration Officer for Plas Madoc.

##### Little Sunflowers

Little Sunflowers is funded by WCBC and provides childcare service for 12.5 hours per week free of charge for children aged 2 to 3. The project is still open for over 3's but there is a charge of £2 per session. Little Sunflowers provides a friendly and supportive environment for children to learn, develop and socialise in a fun and caring manner.

##### Get Out and Play

This is an open access play scheme that runs throughout school holidays designed for children and young people aged 5-15. The scheme is funded by WCBC and allows children and young people to get out and have fun and enjoy time spent playing with other people of their own age.

##### Wildlife Explorers Group

This is an offspring project of the Sensory Garden. This project gives youngsters the opportunity to get out and about visiting local wildlife sites and taking part in practical hands on projects.

##### FAT Club

The Fitness and Trimming club is funded by WCVA and is for local residents to take part in fitness and exercise activities.

#### 16. UNRESTRICTED INCOME FUNDS

	Balance at 1 Apr 2007	Incoming resources	Outgoing resources	Transfers	Balance at 31 Mar 2008
	£	£	£	£	£
General Funds	<u>207,302</u>	<u>535,784</u>	<u>(547,142)</u>	<u>(10,409)</u>	<u>185,535</u>

**PLAS MADOC COMMUNITIES FIRST  
COMPANY LIMITED BY GUARANTEE**

**NOTES TO THE FINANCIAL STATEMENTS**

**YEAR ENDED 31 MARCH 2008**

**17. ANALYSIS OF NET ASSETS BETWEEN FUNDS**

	Tangible fixed assets £	Net current assets/ (liabilities) £	Total £
<b>Restricted Income Funds:</b>			
People and Places	237	20,787	21,024
Plas Madoc Rockets	–	547	547
Youth Charity Media Project	4,161	(896)	3,265
Youth Charity Angling Project	–	1,757	1,757
Youth Charity Regeneration Officer	–	27,518	27,518
Young Mums Group	–	2,001	2,001
Wildlife Group	546	3,574	4,120
Little Sunflowers	6,129	4,753	10,882
Parent Support Group	–	2,251	2,251
Cymorth	161	10,079	10,240
Rangers Group	1,112	2,516	3,628
Plas Madoc Mixers	1,121	275	1,396
Trim Trail	8,414	1,105	9,519
Toy Library	3,524	(914)	2,610
Netball	–	750	750
Food Co-Op	–	1,095	1,095
Get Out & Play	–	2,316	2,316
VEG	–	777	777
Football Club	–	300	300
WREN	10,563	7,341	17,904
Farepak	–	570	570
Just 4 U	–	1,188	1,188
Coracle Project	–	11,187	11,187
Jujitsu	–	5,000	5,000
Integrated Children's Centre	–	4,745	4,745
50 Plus Group	–	1,824	1,824
Dance Group	–	3,330	3,330
Cricket Club	–	5,550	5,550
Waggie Tails	–	1,288	1,288
Plas Madoc Youth Safety Group	–	1,695	1,695
Young Olympians	–	1,793	1,793
Pride in Our Street	–	3,000	3,000
Community Learning	–	1,888	1,888
	<u>39,537</u>	<u>127,421</u>	<u>166,958</u>
<b>Total Funds</b>	<u><u>39,537</u></u>	<u><u>127,421</u></u>	<u><u>166,958</u></u>

**PLAS MADOC COMMUNITIES FIRST  
COMPANY LIMITED BY GUARANTEE**

**DETAILED STATEMENT OF FINANCIAL ACTIVITIES**

**YEAR ENDED 31 MARCH 2008**

**18. COMPANY LIMITED BY GUARANTEE**

The company is limited by guarantee and does not have any share capital.

**19. COMMITMENTS UNDER OPERATING LEASES**

At 31 March 2008 the charity had annual commitments under non-cancellable operating leases as set out below.

	<b>Assets other than land and buildings</b>	
	<b>2008</b>	<b>2007</b>
	<b>£</b>	<b>£</b>
<b>Operating leases which expire:</b>		
Within 2 to 5 years	<b><u>3,376</u></b>	<b><u>-</u></b>